



Atlas Copco



**Oil-injected rotary  
screw compressors**

G 2-7 VSD  
G 2-7  
G 7L-15  
G 15L-22



## Innovating for a sustainable future

At Atlas Copco, we have always looked ahead. Which products and services will make our customers more successful? Your future drives the Atlas Copco team every day. It is the reason why we devote so much time and so many resources to innovation. If there are technologies that will advance your productivity, we will find them. That is what we have been doing for more than 150 years now, setting new standards in compressed air reliability, efficiency, connectivity, and sustainability.

It's that last principle that now comes first. Sustainability is no longer something we should strive for, but something we must achieve. Productivity and growth will have to be built on sustainability. Atlas Copco – our products, our services, and our people – will help you get there, as we always have.

### The technology that drives energy efficiency



#### High-efficiency element

Atlas Copco's in-house developed, patented screw element ensures a highly efficient compression process.



#### VSD technology

The G 2-7's VSD technology gives you superior reliability, performance and energy savings.



#### Elektronikon® NanoTM

Our state-of-the-art controller allows for remote monitoring and optimization of your G, including its energy use.

## The ideal small business compressor

Atlas Copco compressors are legendary for their reliability and efficiency. That is why our G series has long been the preferred air solution for small and medium-sized businesses. The G 2-7 VSD, the G 2-7, the G 7L-15, and the G 15L-22 simply check all the boxes.

#### Built-in reliability

- Atlas Copco's patented rotary screw element allows for continuous operation.
- The complete unit is designed to run reliably at ambient temperatures of up to 46°C/115°F.
- G 2-7 VSD's gradual start-up ensures less stress on key components and lower starting currents.

#### Top performance

- Silent operation thanks to the belt-driven element.
- G 2-7 VSD ensures a more stable pressure.
- Full feature version available with integrated refrigerant dryer and filters.



#### State-of-the-art connectivity

- Control your compressor with the Bluetooth® connection on your smartphone.
- Monitor compressor pressure, temperature, running hours and operational mode from anywhere.
- Advanced control algorithms, such as Delayed Second Stop, optimize your G's efficiency and reliability.
- Run a leakage detection program to uncover energy waste in your compressed air system.
- Real-time notifications are sent directly to your computer or mobile device.

#### Easy installation and maintenance

- Available in multiple configurations – including floor- or tank-mounted and with or without integrated dryer.
- Extremely small footprint and cooling air discharge from the top allow for placement against a wall or even in a corner.
- Main components, oil separator and filter are easily accessible.



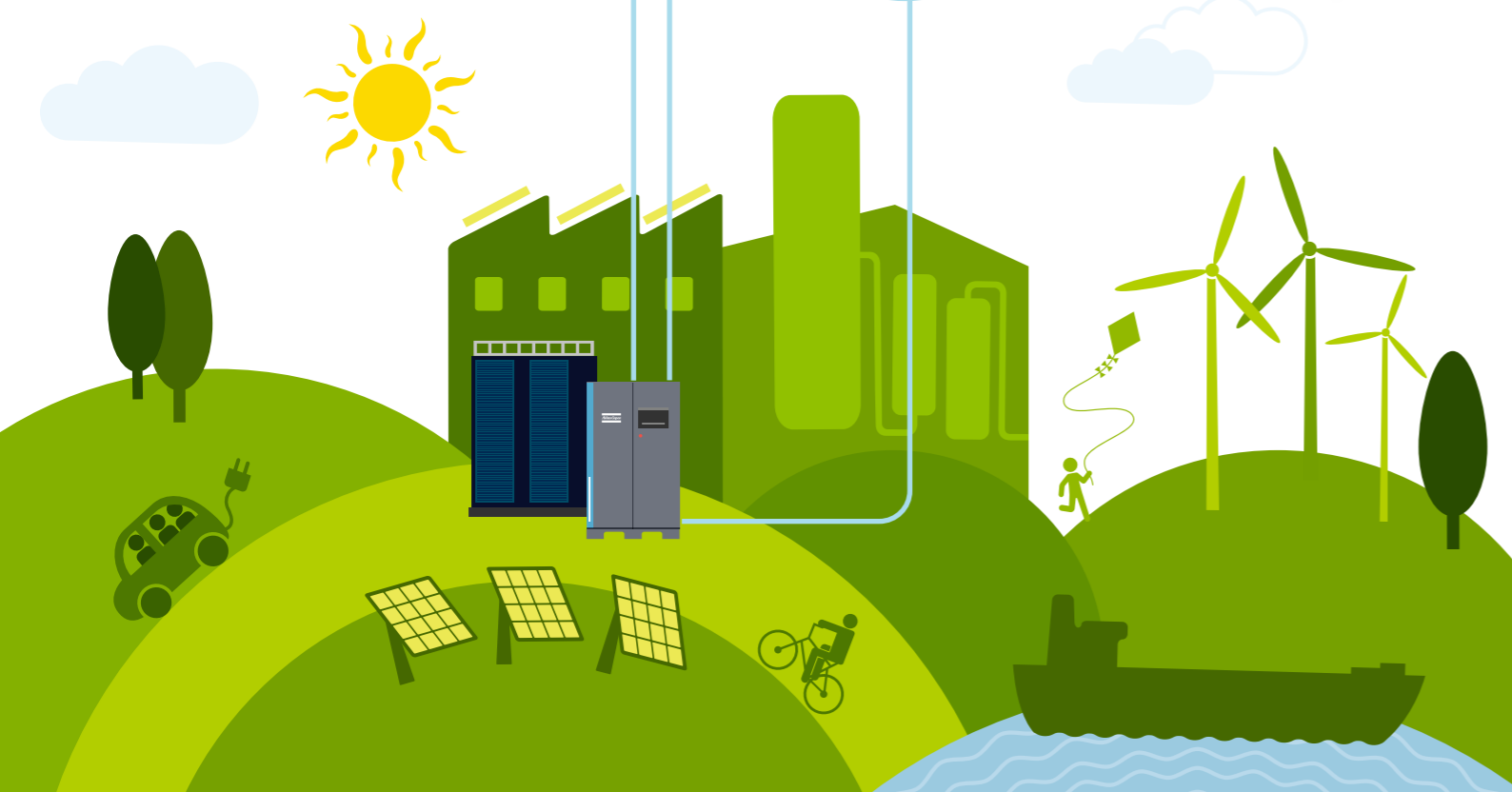
### New: G 2-7 VSD

Our smallest G compressors now also come with Variable Speed Drive (VSD) technology. While traditional fixed-speed compressors always run at 100%, VSD units match their motor speed to the fluctuations in your air demand. As a result, you enjoy a more stable pressure, less noise, less component wear, and significant energy savings for the larger models.



#### Robust and efficient compression element

Atlas Copco's trusted rotary screw element offers high free air delivery and supreme reliability.



PORTLAND COMPRESSOR Experience You Can Depend On 800-542-8300

## G 2-7 VSD

A workshop compressor must be easy to use, as quiet as possible, versatile, and always reliable. The new G 2-7 VSD outperforms traditional fixed-speed compressors on all these benchmarks to give you top performance for many years.

### Next-generation element

- In-house developed to deliver more air with greater efficiency.
- Belt-driven for lower sound emissions and low vibrations.

### High-efficiency motor

- IE3 efficiency.
- Allows for 100% continuous duty cycle.
- Able to operate in up to 46°C/115°F ambient temperatures.

### High-quality inverter

Allows the compressor to adapt its motor speed to your air demand for increased reliability and advanced energy savings.

### Full Feature (FF)

- Integrated refrigerant air dryer for dry, quality air.
- In-line air filters.



### Receiver

Choose between a floor- or a tank-mounted model. The tank-mounted version offers a more compact footprint than a standalone receiver.

### Low and easy maintenance

- Long service interval of 4,000 hours.
- The main components, oil separator and filter are easily accessible.

### Elektronikon Nano

- Remote control (Bluetooth<sup>®</sup>) and monitoring (WiFi) of compressor pressure, temperature, running hours and operational mode.
- Advanced control algorithms, i.e. Delayed Second Stop.
- Leakage detection program.
- Real-time compressor notifications on your computer or mobile device.

### The big benefits of a small VSD compressor

Why choose a small VSD compressor? Because it is simply better than a fixed-speed model:

1. Top performance: You get a more stable pressure than with fixed-speed compressors.
2. Higher reliability: VSD technology is less taxing on bearings and belts. As a result, these key components typically last longer and require less maintenance.
3. Lower noise: Thanks to the lower speeds of the element and the motor-mounted fan, the G 2-7 VSD only produces as much noise as a household appliance.
4. Energy savings: Because you're not wasting energy when you need less air, the G 5 and 7 VSD can lower your energy use by more than 20%.

## G 2-7, G 7L-15 and G 15L-22

The Atlas Copco G series has long been the trusted rotary screw compressor for workshop applications such as spray painting, drilling, and woodworking. With a G, you enjoy best-in-class performance, ease of use, reliability and efficiency. All models can be delivered tank- or floor-mounted for maximum flexibility. Full Feature versions are available for equipment that requires dry, clean air.



### G 2-7 Compact and efficient

- Compared to piston compressors, the G 2-7 is quieter, cleaner, and more economical to own, while working longer hours.
- The state-of-the-art rotary screw element and high-efficiency IE3 motor minimize energy use and operational costs.
- Can be operated 24/7, even in temperatures up to 46°C/115°F.
- Thanks to the low-vibration belt system, the G 2-7 is extremely quiet.
- Use the **SMARTLINK** app on your mobile device to remotely control and monitor your compressor.
- Over-the-air updates via the Elektronikon Nano controller ensure your G 2-7 always has the latest features.



### G 7L-15 Industry-leading performance

- High-efficiency IE3 motor and in-house developed screw element ensure best-in-class performance, total reliability and low power consumption.
- 100% duty cycle, even in temperatures up to 46°C/115°F.
- Thanks to load/no load control, the compressor controller switches automatically to the optimum control mode for high, low and intermittent air consumption.
- Remote control and monitoring with the state-of-the-art Elektronikon Nano controller.
- Thanks to over-the-air updates, you don't miss out on new features and performance improvements.

### G 15L-22 The robust, economical compressor

- Drive train with premium screw element and high-efficiency IE3 motor offers top performance and low energy costs.
- Reliable operation with a 100% continuous duty cycle in up to 46°C/115°F ambient temperatures.
- Extremely small footprint with possible placement against a wall or in a corner.
- Available in multiple configurations.
- Premium connectivity with the Elektronikon Nano and mobile **SMARTLINK** control and monitoring.
- Over-the-air updates ensure your G 15L-22 gets even better over time.



PORTLAND  
COMPRESSOR

Experience You Can Depend On

800-542-8300

### A screw compressor to support your growth

A piston compressor is the conventional choice for small and starting companies. However, as your business increases in size and needs, your production equipment must keep up. This often means upgrading your starter piston compressor to a high-efficiency screw compressor. An oil-injected screw compressor delivers immediate benefits in four areas: duty cycle, cost of ownership, oil carry-over and noise level. In other words: screw compressors are quieter, cleaner, and cheaper to own while working longer hours.

	Piston compressor	Oil-injected screw compressor
Maximum duty cycle	60-70%	100%
Oil carry-over	>30 ppm	<3 ppm
Typical sound level	80-85 dBa	>60-70 dBa
Total cost	Higher	Lower



## Next-generation connectivity

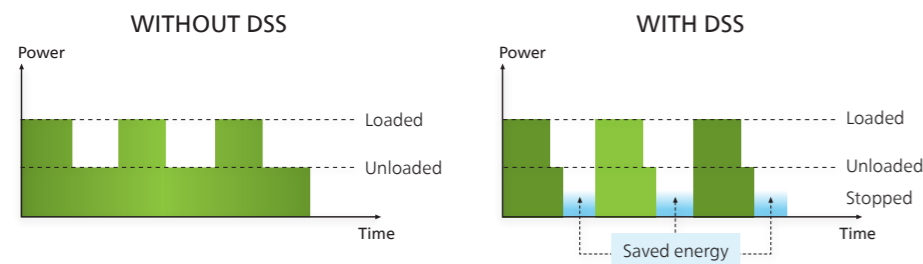
### A premium controller

The revolutionary Elektronikon Nano gives you ease of use, a reliable performance and maximum efficiency:

- High-quality, intuitive display.
- Remote control and monitoring.
- Real-time service alerts on your computer or mobile device.

### Delayed Second Stop (DSS)

The Nano's DSS feature stops the compressor's motor whenever possible. The controller maintains the desired system pressure while minimizing the motor run time to keep your energy consumption at a minimum.



### SMARTLINK control & monitoring

Why walk over to your compressor when you can just manage it on your mobile device with our SMARTLINK app?

- REMOTE CONTROL: Turn your G on/off, select unload/load pressure and pressure bands, and set a weekly schedule via Bluetooth.
- MONITORING & OPTIMIZATION: Monitor your compressor's pressure, temperature, running hours and operation mode from anywhere.
- ELIMINATE ENERGY WASTE: Run a leakage detection program and find energy losses in your air system.



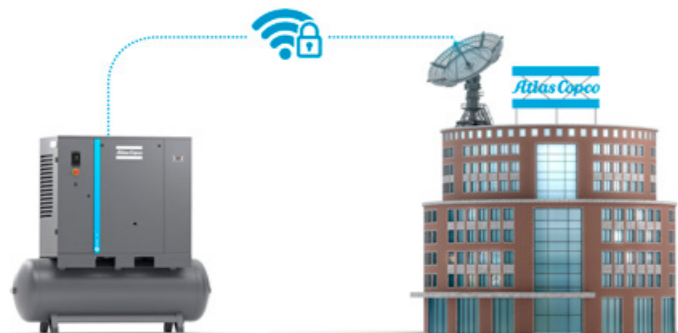
Download SMARTLINK now!

Download on the App Store

GET IT ON Google Play

### The always improving compressor

With a Nano-controlled G, you don't miss out on innovations, even after you have bought your compressor. As new features become available and if you agree, they will be sent automatically and securely to your compressor. The result: your G never gets outdated.



## Quality air performance

### Full Feature with built-in dryer

The Full Feature version comes with a built-in refrigerant air dryer. It cools the compressed air and removes any moisture before it can enter your air system. This prevents rust in your compressed air piping and avoids damage to your pneumatic tools.

### A choice of filters

To ensure your compressed air meets the quality requirements of a wide range of applications, a filter can be added:

- G 2-7 VSD: DD
- G 7L-15: DDx or PDx
- G 2-7: DD
- G 15L-22: DD or UD+

## Options

The G 2-7 VSD, the G 2-7, the G 7L-15 and G 15L-22 come with a host of optional features to customize the performance of your compressor.

Available options	G 2-7 (VSD)	G 2-7 FF (VSD)	G 7L-15	G 7L-15 FF	G 15L-22	G 15L-22 FF
Integrated aftercooler	O	O	O	FB	FB	FB
Water separator (shipped loose)	-	-	O	FB	O	FB
Timer water drain on water separator (shipped loose)	-	-	O	-	-	-
Timer drain on air receiver (tank-mounted only)	O	O	O	O	-	FB
Electronic no-loss water drain on water separator (shipped loose)	-	-	O	FB	O	O
Electronic no-loss water drain on air receiver (tank-mounted only)	O	O	O	O	O	O
Integrated filter kit	-	O	-	O	-	O
500 l/120 gal air receiver (tank-mounted only)	-	O	O	O	FB	FB
Tropical thermostat	O	O	O	O	O	O
Anti-condensation kit	O	O	-	-	-	-
Food-grade oil	O	O	O	O	O	O
RSXD oil	O	O	O	O	O	O

FB Standard      O Optional      - Not available

# Technical specifications

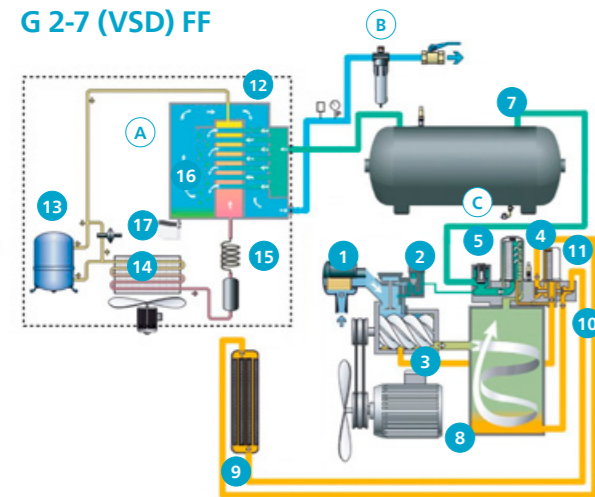
Compressor type	Maximum working pressure		Capacity FAD			Installed motor power		Noise level measured at 70% load dB(A)	Weight (kg/lbs)	
	bar(e)	psi	l/s	m³/h	cfm	kW	hp		Pack	Full Feature
<b>50 Hz version</b>										
G 2 VSD	8	116	6.0	21.6	12.7	2.2	3	59	165/364	190/419
	10	145	4.9	17.6	10.3	2.2	3	59	165/364	190/419
G 3 VSD	8	116	7.7	27.6	16.2	3	4	59	170/375	195/430
	10	145	6.0	21.7	12.7	3	4	59	170/375	195/430
G 4 VSD	8	116	9.7	34.9	20.5	4	5.5	60	175/386	200/441
	10	145	8.4	30.2	17.8	4	5.5	60	175/386	200/441
G 5 VSD	8	116	14.9	53.6	31.6	5.5	7.5	63	185/408	210/463
	10	145	12.6	45.5	26.8	5.5	7.5	63	185/408	210/463
G 7 VSD	8	116	17.3	62.1	36.6	7.5	10	63	195/430	225/496
	10	145	16.1	57.9	34.1	7.5	10	63	195/430	225/496
<b>60 Hz version</b>										
G 2 VSD	8	116	6.0	21.6	12.7	2.2	3	59	180/397	205/452
	10	145	4.9	17.6	10.3	2.2	3	59	180/397	205/452
G 4 VSD	8	116	9.7	34.9	20.5	4	5.5	60	190/419	215/474
	10	145	8.4	30.2	17.8	4	5.5	60	190/419	215/474
G 5 VSD	8	116	14.9	53.6	31.6	5.5	7.5	63	200/441	225/496
	10	145	12.6	45.5	26.8	5.5	7.5	63	200/441	225/496
G 7 VSD	8	116	17.3	62.1	36.6	7.5	10	63	210/463	240/529
	10	145	16.1	57.9	34.1	7.5	10	63	210/463	240/529

Standard air receiver size: 200 l/53 gal & 2x90 l/24 gal.

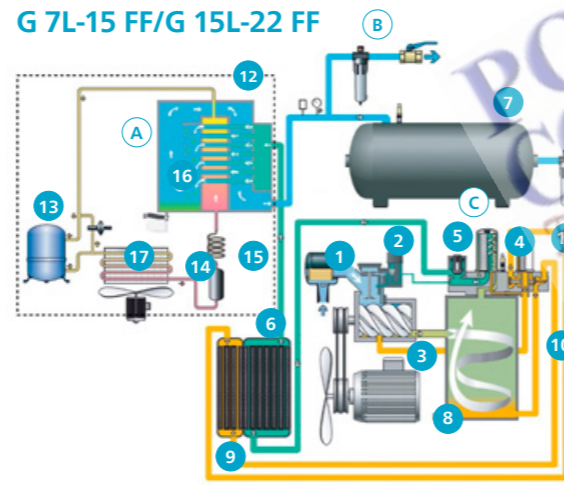
Unit performance measured according to ISO 1217, latest edition.  
Mean noise level (pack variant) measured according to Pneurop/Cagi PN8NTC2 test code; tolerance 3 dB(A)

# Flow diagrams

G 2-7 (VSD) FF



G 7L-15 FF/G 15L-22 FF



- Intake air
- Oil
- Dry air
- Refrigerant gas
- Air/oil mixture
- Wet air
- Water
- Refrigerant liquid

## Air Flow

- 1 Inlet air filter
- 2 Inlet valve
- 3 Compression element
- 4 Oil separator element
- 5 Minimum pressure valve
- 6 Aftercooler
- 7 Air receiver

## Oil Flow

- 8 Oil reservoir
- 9 Oil cooler
- 10 Thermostatic valve block
- 11 Oil filter

## Refrigerant Flow

- 12 Evaporator
- 13 Refrigerant compressor
- 14 Condenser
- 15 Capillary tube
- 16 Water separator
- 17 Electronic automatic drain

## Options

- A Full Feature
- B DD/PD\* high-efficiency air filter (\*PD not for G 2-7)
- C Electronic receiver drain

# Technical specifications

Compressor type	Maximum working pressure		Capacity FAD			Installed motor power		Noise level** dB(A)	Weight (kg/lbs)	
	bar(e)	psi	l/s	m³/h	cfm	kW	hp		Pack	Full Feature
<b>50 Hz version</b>										
G 2	8	116	5.7	20.6	12.1	2.2	3	61	165/364	190/419
	10	145	4.7	16.9	9.9	2.2	3	61	165/364	190/419
G 3	8	116	7.7	27.6	16.2	3	4	61	170/375	195/430
	10	145	6.0	21.5	12.7	3	4	61	170/375	195/430
G 4	8	116	9.6	34.7	20.4	4	5.5	62	175/386	200/441
	10	145	8.4	30.1	17.7	4	5.5	62	175/386	200/441
G 5	8	116	14.3	51.5	30.3	5.5	7.5	65	185/408	210/463
	10	145	12.6	45.4	26.7	5.5	7.5	65	185/408	210/463
G 7	8	116	17.1	61.7	36.3	7.5	10	67	195/430	225/496
	10	145	16.0	57.7	33.9	7.5	10	67	195/430	225/496
G 7L	7.5	109	20.9	75.2	44.3	7.5	10	65	245/540	327/721
	10	145	18.2	65.5	38.6	7.5	10	65	245/540	327/721
	13	189	14.0	50.4	29.7	7.5	10	65	245/540	327/721
G 11	7.5	109	29.1	104.8	61.7	11	15	69	258/569	340/750
	10	145	24.1	86.8	51.1	11	15	69	258/569	340/750
	13	189	19.3	69.5	40.9	11	15	69	258/569	340/750
G 15	7.5	109	32.6	117.4	69.1	15	20	71	270/595	340/750
	10	145	29.1	104.8	61.7	15	20	71	270/595	340/750
G 15L	13	189	23.2	83.5	49.2	15	20	71	270/595	340/750
	7.5	109	42.5	153.0	90.1	15	20	67	479/1056	537/1184
	10	145	38.5	138.6	81.6	15	20	67	479/1056	537/1184
G 18	13	189	31.2	112.3	66.1	15	20	67	479/1056	537/1184
	7.5	109	52.1	187.6	110.4	18	25	69	481/1060	545/1202
	10	145	45.4	163.4	96.2	18	25	69	481/1060	545/1202
G 22	13	189	38.5	138.6	81.6	18	25	69	481/1060	545/1202
	7.5	109	62.0	223.2	131.4	22	30	70	497/1096	561/1237
	10	145	54.1	194.7	114.5	22	30	70	497/1096	561/1237
G 22	13	189	46.4	167.1	98.3	22	30	70	497/1096	561/1237
	7.5	109	6.0	21.6	12.7	2.2	3	61	180/397	205/452
	10	145	4.4	15.8	9.3	2.2	3	61	180/397	205/452
G 4	8	116	8.8	31.7	18.6	4	5.5	62	190/419	215/474
	10	145	7.9	28.4	16.7	4	5.5	62	190/419	215/474
G 5	8	116	13.4	48.2	28.4	5.5	7.5	65	200/441	225/496
	10	145	11.9	42.8	25.2	5.5	7.5	65	200/441	225/496
G 7	8	116	15.5	55.8	32.8	7.5	10	67	210/463	240/529
	10	145	14.7	52.9	31.1	7.5	10	67	210/463	240/529
G 7L	7.4	107	21.1	76.0	44.7	7.5	10	65	250/551	362/798
	9.1	132	18.5	66.6	39.2	7.5	10	65	250/551	362/798
	10.8	157	16.6	59.8	35.2	7.5	10	65	250/551	362/798
G 11	12.5	181	13.9	50.0	29.5	7.5	10	65	250/551	362/798
	7.4	107	28.6	103.0	60.6	11	15	69	255/562	365/805
	9.1	132	24.9	89.6	52.8	11	15	69	255/562	365/805
G 15	10.8	157	23.1	83.2	48.9	11	15	69	255/562	365/805
	12.5	181	19.1	68.8	40.5	11	15	69	255/562	365/805
	7.4	107	32.5	117.0	68.9	15	20	71	260/573	375/827
G 15L	9.1	132	29.8	107.3	63.1	15	20	71	260/573	375/827
	10.8	157	27.6	99.4	58.5	15	20	71	260/573	375/827
	12.5	181	23.1	83.3	49.0	15	20	71	260/573	375/827
G 18	7.4	107	44.0	158.4	93.2	15	20	67	479/1056	537/1184
	9.1	132	38.8	139.7	82.2	15	20	67	479/1056	537/1184
	10.8	157	37.0	133.2	78.4	15	20	67	479/1056	537/1184
G 22	12.6	182	32.7	117.7	69.3	15	20	67	479/1056	537/1184
	7.4	107	51.8	186.5	109.8	18	25	69	481/1060	545/1202
	9.1	132	46.9	168.8	99.4	18	25	69	481/1060	545/1202
G 22	10.8	157	43.3	155.9	91.7	18	25	69	481/1060	545/1202
	12.6	182	39.9	143.6	84.5	18	25	69	481/1060	545/1202
	7.4	107	60.5	217.8	128.2	22	30	70	497/1096	561/1237
G 22	9.1	132	53.7	193.3	113.8	22	30	70	497/1096	561/1237
	10.8	157	48.6	175.0	103.0	22	30	70	497/1096	561/1237
	12.6	182	46.0	165.6	97.5	22	30	70	497/1096	561/1237

\* Tank-mounted variant.  
\*\* Floor-mounted variant.

Standard air receiver size, G 2-7: 200 l/60 gal, G 7L-15: 270 l/80 gal.  
Unit performance measured according to ISO 1217, latest edition.  
Mean noise level (pack variant) measured according to Pneurop/Cagi PN8NTC2 test code; tolerance 3 dB(A).

# Dimensions

## Floor-Mounted Models

	D (mm)	W (mm)	H (mm)
G 2-7 VSD Pack	665	620	975
G 2-7 Pack	665	620	950
G 7L-15 Pack	720	855	1090
G 15L-22 Pack	833	1180	1220
G 2-7 VSD Full Feature	665	1015	975
G 2-7 Full Feature	665	1015	950
G 7L-15 Full Feature	720	1205	1090
G 15L-22 Full Feature	833	1280	1220

## Tank-Mounted Models

	D (mm)	W (mm)	H (mm)
G 2-7 VSD Pack	665	1430	1285
G 2-7 Pack	665	1430	1260
G 2-7 Pack 2x90l tanks	780	1000	1295
G 7L-15 Pack	650	1603	1337
G 15L-22 Pack	833	1921	1832
G 2-7 VSD Full Feature	665	1430	1285
G 2-7 Full Feature	665	1430	1260
G 2-7 Full Feature 2x90l tanks	780	1000	1295
G 7L-15 Full Feature	650	1603	1337
G 15L-22 Full Feature	833	1921	1832

\* Dimensions of G 7L-15 tank-mounted are 650 x 1935 x 1463 mm (L x W x H) with a 500 l vessel.

