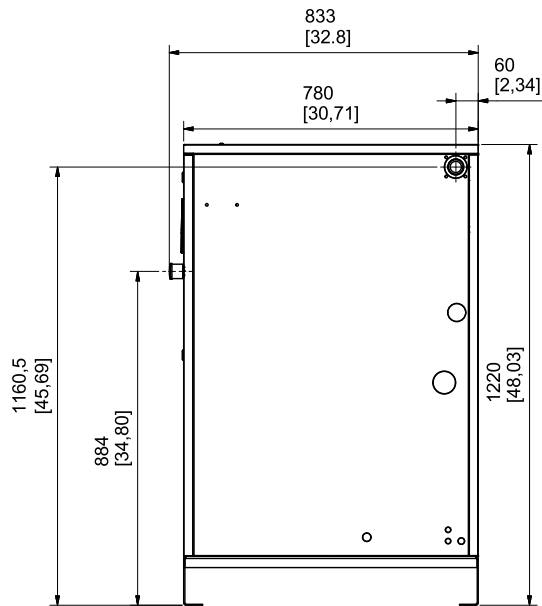
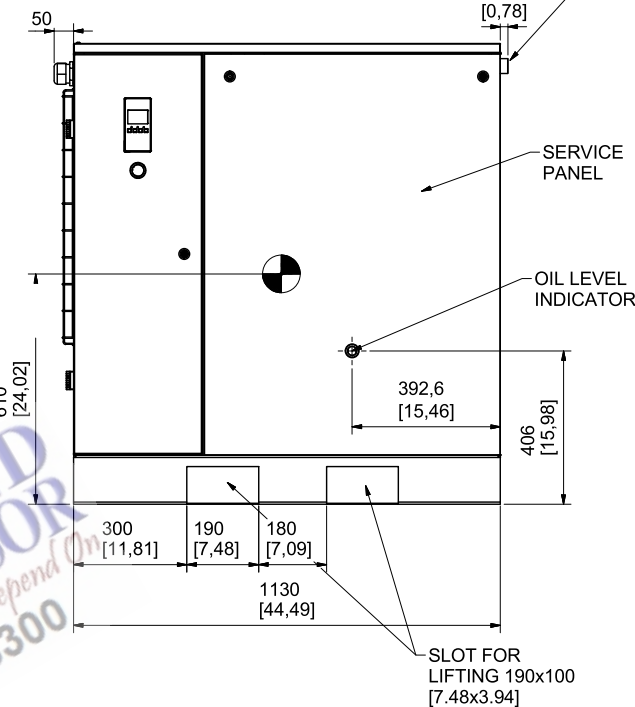


All materials supplied are in compliance with the requirements of the List of Prohibited Substances

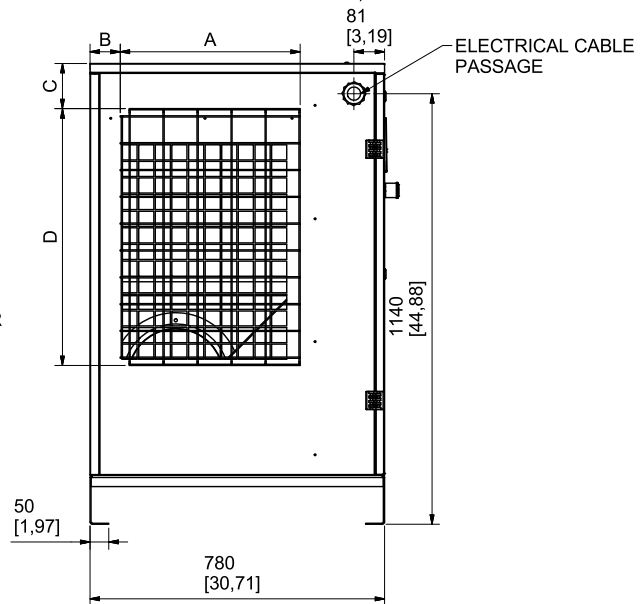


COOLING AIR INLET OF COMPRESSOR AND MOTOR

COOLING AIR OUTLET OF COMPRESSOR AND MOTOR



COMPRESSED AIR OUTLET G 1" (IF APPLICABLE NPT 1" SUPPLIED LOOSE)



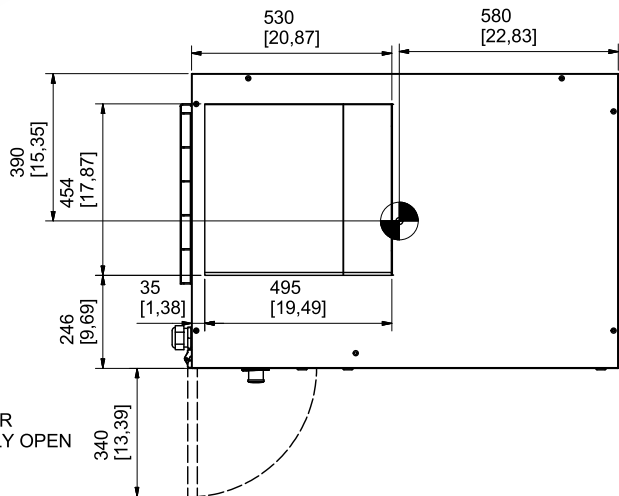
ELECTRICAL CABLE PASSAGE

PORTLAND COMPRESSOR

Experience You Can Depend On

800-542-8300

SLOT FOR LIFTING 190x100 [7.48x3.94]



ALL DIMENSIONS: mm [inch]

- Center of gravity

AIR COOLING INLET GRID DIMENSION [mm]				
	A	B	C	D
15 kW / 20HP	476,5	80	119,5	680
18,5 kW / 25 HP	476,5	80	119,5	680
22 kW / 30 HP	476,5	80	119,5	680
30 kW / 40 HP	520	45	270	590

AIR COOLING INLET GRID DIMENSION [in]				
	A	B	C	D
15 kW / 20HP	18,8	3,15	4,7	26,77
18,5 kW / 25 HP	18,8	3,15	4,7	26,77
22 kW / 30 HP	18,8	3,15	4,7	26,77
30 kW / 40 HP	20,47	1,77	10,63	23,23

APPROX WEIGHT		
	±50 (KG)	±110 (lbs)
15 kW / 20HP	313	690
18,5 kW / 25 HP	328	723
22 kW / 30 HP	344	758
30 kW / 40 HP	444	979

Tolerances, if not indicated, according to:

Name	DIMENSION DRAWING C67-C80 BELT PACK FM		Confidentiality Class	acc. to 1102 K
Material	Not Applicable		Confidential	
Treatment	Not Applicable		INV	
Scale	1 : 10	Family	C67-C80 Belt	Compare
Drawn by	caladanielt	Blank nr.		Replaces
Drawing format	Blank wt	Kg	Fin wt.	N/A
STATUS	A2	Designation		Sheet 1 / 1
Des checked.	Prod checked.	Approved.	Date	09/04/2018

9828083716

CONFIDENTIAL: This document is property of Atlas Copco AB and shall not without our permission be altered, copied, used for manufacturing or communicated to any other person or company.

Ed	Position	Modified from	Date	Intr./Appd.
01		ADDED MEASURE FOR 40HP - CID 26917- DN180625 22	09/04/2018	adanielt

9828083716	00.01
Parent 3D model	Ed. Version 3D

Approved	Des checked.	Prod checked.	Approved.	Date	09/04/2018
----------	--------------	---------------	-----------	------	------------