

*Atlas Copco*

# Two stage cast iron reciprocating compressors

CRS-1  
Parts manual



PORTLAND  
COMPRESSOR  
Experience You Depend On  
Atlas Copco  
800-542-8300



**Atlas Copco**  
Two stage cast iron  
reciprocating compressors

**Parts manual**

- Copyright 2022, Atlas Copco Airpower n.v., Antwerp, Belgium. Any unauthorized use or copying of the contents or any part thereof is prohibited. This applies in particular to trademarks, model denominations, part numbers and drawings.
- Use only authorized parts. Any damage or malfunction caused by the use of unauthorized parts is not covered by Warranty or Product Liability.

# Table of contents

Overhaul Kit.....	4
Recommended Spare Parts .....	4
Gasket Set.....	4
Serial Number Identification .....	5
Ordering Replacement Parts .....	5
Crankcase Lubricant Capacity .....	5
Roto-Extend-S & Roto-Extend Lubricants.....	5
Crankcase Group .....	6
Crankshaft Group .....	7
Connecting Rod & Piston Groups .....	8-11
Cylinder & Head Groups.....	12-15
LOL SW.....	16
Control Piping Schematics .....	17
Pilot Valves .....	18
Differential Setting Chart .....	18
Suction Valve Unloader Assemblies.....	19
Decals .....	18
Typical Unit Repair Parts List.....	20-22

**PORTLAND  
COMPRESSOR**  
*Experience You Can Depend On*  
800-542-8800

# Introduction

This manual provides information for the Model CRS-1 reciprocating compressor.

The Model CRS-1 is an aircooled, two stage, two cylinder, splash lubricated compressor, with up to 175 PSI continuous pressure capability. It has a 4.5” low pressure bore and a 2.50” high pressure bore, with a 3.5” stroke. This compressor can be run at 400-1200 RPM.

## Available options include :

- Head unloaders
- LOLS (Low Oil Level Switch)
- Unloaders + LOLS

## Changes

This is the original edition

## Overhaul kit 2022157502

Item #	Qty.	Part number	Description
1	1	2022111301	ST, RING, PISTON, LP, STANDRDSIZE
1	1	2022111401	ST, RING, PISTON, HP, STANDRDSIZE
1	1	2022106801	ST, GASKET, CRS-1
1	1	2024411651	AY, PLATE, VALVE, CRS-1
1	1	2023400852	ELEMENT, FILTER, AIR, POLYESTER
1	1	2021114804	AY, PIN, PSTN, LP
1	1	2021114803	AY, PIN, PSTN, HP
1	1	2024411302	AY, CONROD, LP, 7.75 CTRS
1	1	2024411356	AY, CONROD, HP, 7.75 CTRS, W/BRG

## Recommended spare parts

Item #	Qty.	Part number	Description
1	1	2023400852	AIR FILTER ELEMENT, (FITS 2023400823 AIR FILTERS)
1	1	2022106801	GASKET SET
1	1	2022128103	REPLACEMENT VALVE ASSEMBLY

## Gasket set 2022106801

Item #	Qty.	Part number	Description
1	1	2024703801	GASKET, BRG.CARRIER, .031 THICK
1	1	2024703502	GASKET, HEAD/PLATE, .031 THK
1	1	2024704502	GASKET, CYL/PLATE, .031 THK
1	1	2024704301	GASKET, CYLINDER/CASE, .031 THK
1	1	2024719400	SEAL, OIL, VITON
6	6	2014706533	SCREW, CAP, CS, HEX, ZN.38NCX3.25
6	6	2014706635	SPRING WASHER, .375X.75X.076

## Serial number identification

The unit serial number identification tag is located on the air tank top plate. The basic compressor serial number decal is located on the side of the crankcase opposite the oil fill side. Fill in the numbers from your compressor unit and basic compressor in the corresponding spaces provided here, and reference this page when ordering replacement parts.

Unit Serial Number

\_\_\_\_\_

Basic Serial Number

\_\_\_\_\_

All replacement parts are to be ordered through an authorized Atlas Copco distributor. Insist on genuine Atlas Copco parts only! Failure to do so may void warranty.

## Caution

Refer to the CRS Industrial / Air Master Series instruction manual for vital lubrication information.

## Caution

Follow all safety precautions outlined in the CRS Industrial / Air Master Series instruction manual.

## Warning

Do not operate this compressor without a totally enclosed belt guard or any other required safety equipment.

## Danger

Air used for breathing or food processing must meet OSHA 1910.134 or FDA 21 CFR 178.3570 regulations. Failure to do so may cause severe injury or death.

## Ordering replacement parts

Prompt service can be rendered on repair parts orders if the following information is given:

- Item 1) The model number, record of change number, & serial number.
- Item 2) The exact part number needed. (Do not order by item numbers.)
- Item 3) The exact quantity needed.
- Item 4) The preferred type of transportation.

## Crankcase lubricant capacity

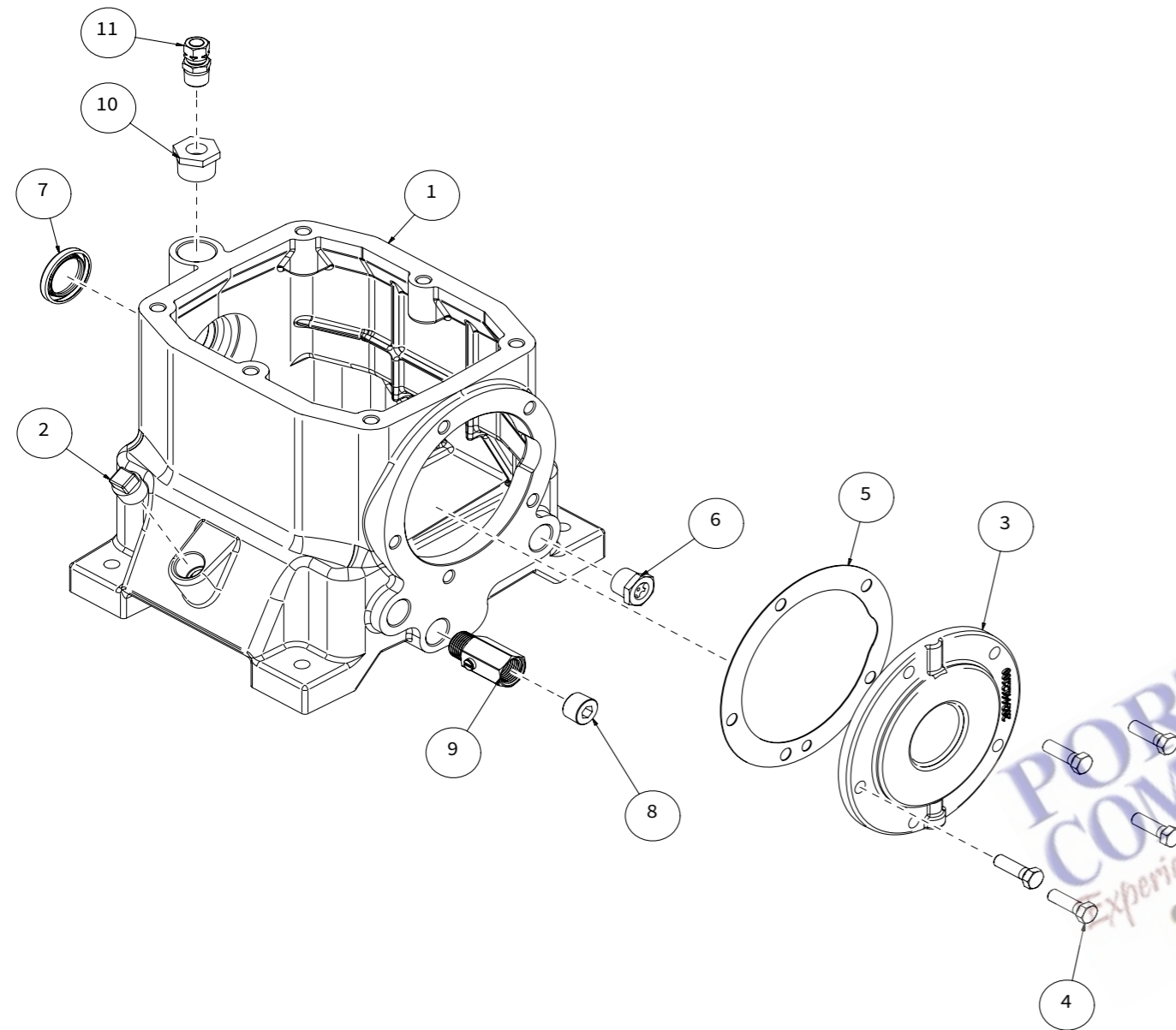
Model	Capacity
CRS-1	2.5 qts (2.37 lit.)

## Roto-extend lubricant

Refer to the chart below to order Roto-Extend-S or Roto-Extend lubricant from your local authorized Atlas Copco distributor.

Roto-Extend-S Lubricant (Synthetic)	
SAE 30 (ISO 100)	
Quart	2025066012
Roto-Extend Lubricant	
SAE 10W (ISO 32)	
Quart	2022100001
SAE 20 (ISO 68)	
Quart	2022100101
SAE 30 (ISO 100)	
Quart	2022100201
SAE 40 (ISO 150)	
Quart	2025066013

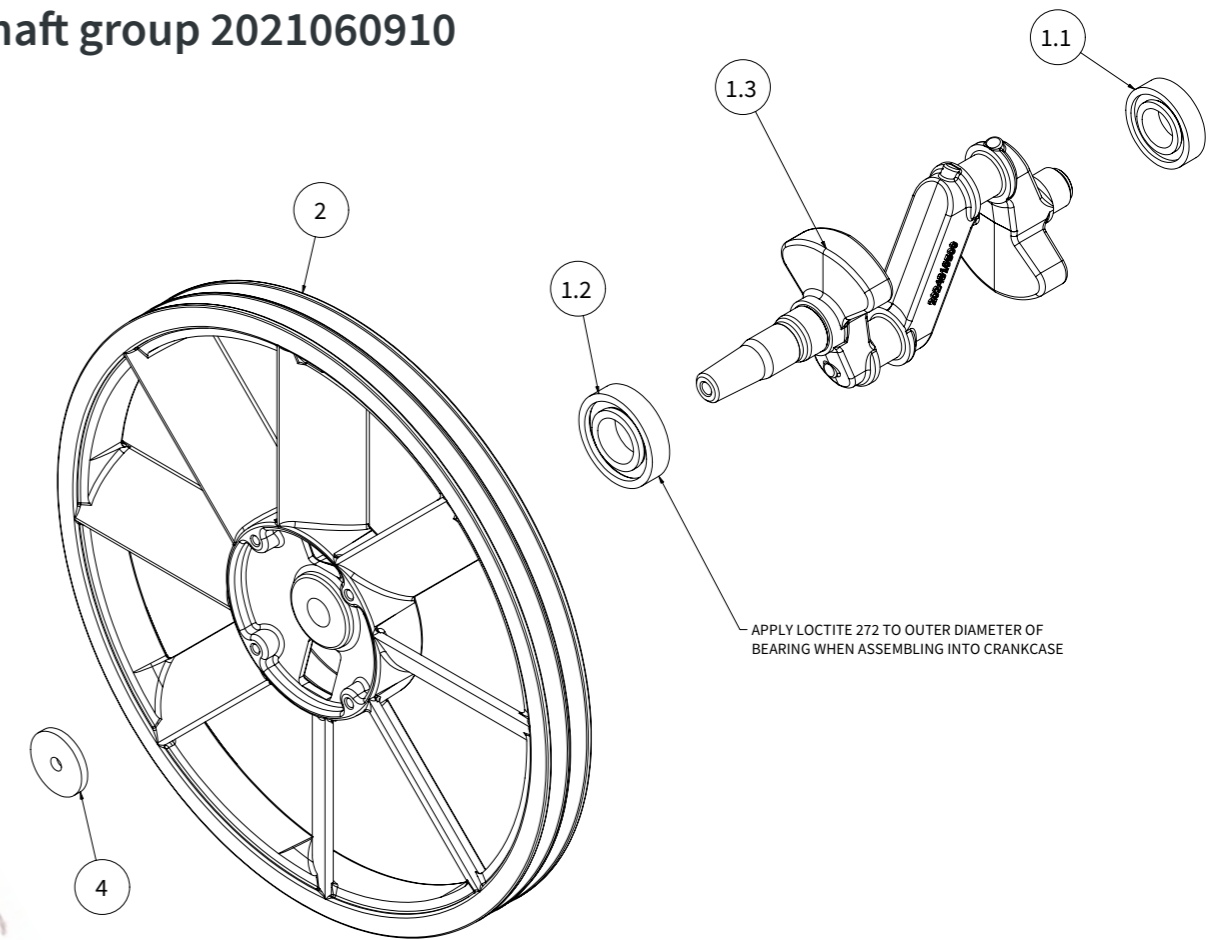
## Crankcase group 2021060812



Item number	Qty.	Part number	Description
1	1	2024319601	CRANKCASE
2	1	2014706678	FIT P, PLUG-, 300PLN 050 SQ HEAD
3	1	2024412101	BEARING CARRIER
4	5	0144324268	SCREW, CAP, CS, HEX, SEAL38NCX1.25
5	1	2024703801	GASKET, BRG.CARRIER, .031 THICK
6	1	2025065928	SIGHTGLASS, 1/2NPT
7	1	2024719400	SEAL, OIL, VITON
8	1	0201470665	PIPE PLUG, 1/2 NPT
9	1	2023924304	VALVE, BALL, MINI, 050P
10	1	2024903409	FIT P, BUSHG, 150GLV, 075X025 FAC
11	1	2025500574	FIT T, CONEC, FLLS, 038NTX038MP

N.S.S. = Not sold separate

## Crankshaft group 2021060910

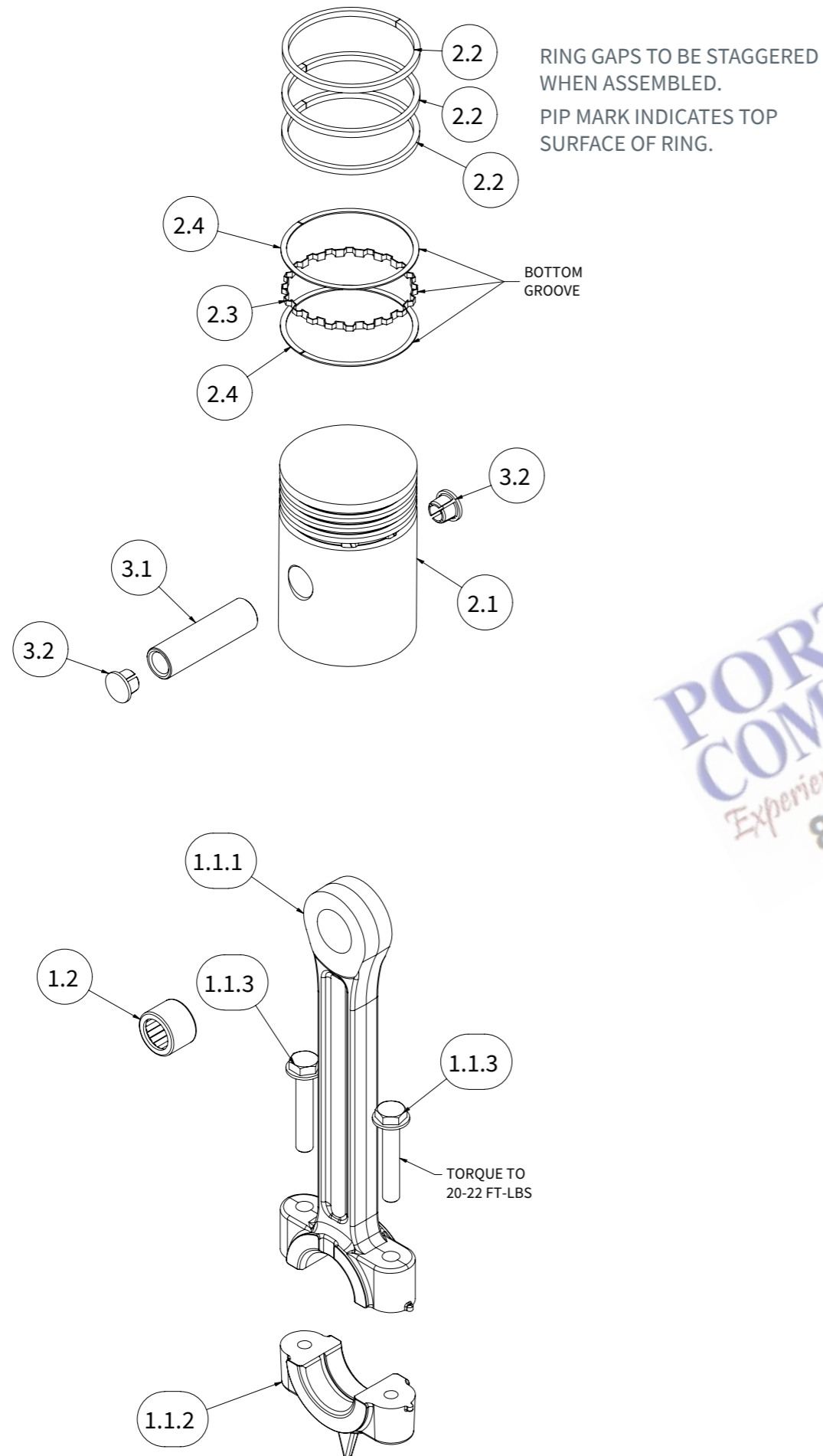


Item number	Qty.	Part number	Description
1	1	2024319551	CRANKSHAFT ASSEMBLY
1.1	1	2024203700	BEARING, RADIAL
1.2	1	2024204400	BEARING, RADIAL
1.3	1	2024319501	CRANKSHAFT, 3.50 STROKE, CRS-1 (N.S.S. - MUST ORDER CRANKSHAFT ASSEMBLY)
2	1	2024319441	SHEAVE
3	1	2024812426	SCREW, CAP, CS, HEX, .38NC-LHX1.00, GR8
4	1	1127030030	WASHER, FLAT, M10, ZN, 50OD, 6 THK

N.S.S. = Not sold separate

# Connecting rod & piston group 2021066004

(High pressure)



Item number	Qty.	Part number	Description
1	1	2021115409	CONNECTING ROD ASSEMBLY, W/BEARING (MUST ORDER PN 2024411356)
1.1	1	2024411306	CONNECTING ROD ASSEMBLY (N.S.S. - MUST ORDER ROD ASSEMBLY)
1.1.1	1	2024411301	CONROD, 7.75 PIN CENTERS (N.S.S. - MUST ORDER ROD ASSEMBLY)
1.1.2	1	2024411401	CAP, CONROD (N.S.S. - MUST ORDER ROD ASSEMBLY)
1.1.3	2	0147310022	TAP SCREW, .31NCX1.75
1.2	1	2024202300	BEARING, NEEDLE, 0.88, 0.62, 0.62W
2	1	2024406504	AY,PISTON/RINGS (N.S.S. - MUST ORDER KIT)
2.1	1	2024406501	PISTON, 2.50D, STANDARD, SINGLEACT
2.2	3	2025034100	RING, PST, CMP, 2.50DX.12W, STNDRD
2.3	1	2025016800	EXPANDER, RNG, OIL, 2.50 OD X .15
2.4	2	2025029200	RAIL, RNG, OIL, 2.50 OD X .03
3	1	2021114803	AY, PIN AND PLUG
3.1	1	2025024610	PIN, PISTON, 0.62X2.23, STEEL
3.2	2	2025027202	PLUG, PIN, PISTON, 0.62 DIA

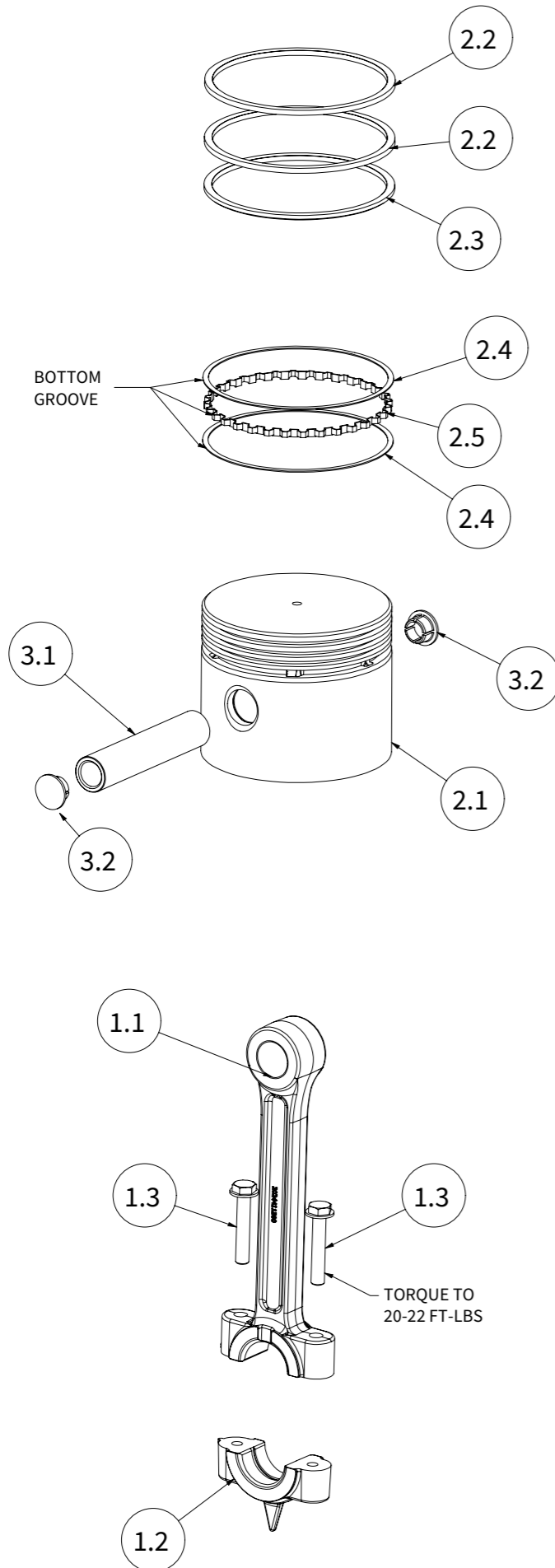
Maintenance parts			
1	2022111401	PISTON RING SET, HP	
1	2024406551	PISTON ASSEMBLY, HP INCLUDES PISTON, RING SET, PISTON PIN AND PISTON PIN PLUGS	
1	2022128202	REPLACEMENT PISTON PIN ASSEMBLY, HP INCLUDES PISTON PIN AND PISTON PIN PLUGS	
1	2024411306	CONNECTING ROD ASSEMBLY	

N.S.S. = Not sold separate

**PORTLAND COMPRESSOR**  
Experience You Can Depend On  
800-542-8300

# Connecting rod & piston group 2021065904

(Low pressure)



RING GAPS TO BE STAGGERED WHEN ASSEMBLED.  
PIP MARK INDICATES TOP SURFACE OF RING.

Item number	Qty.	Part number	Description
1	1	2024411302	CONNECTING ROD ASSEMBLY
1.1	1	2024411301	CONROD, 7.75 PIN CENTERS (N.S.S. - MUST ORDER ROD ASSEMBLY)
1.2	1	2024411401	CAP, CONROD (N.S.S. - MUST ORDER ROD ASSEMBLY)
1.3	2	0147310022	TAP SCREW,.31NCX1.75
2	1	2024405305	AY, PISTON/RINGS (N.S.S. - MUST ORDER KIT)
2.1	1	2024405302	PISTON, 4.50D, STANDARD, SINGLACT
2.2	2	2025034800	RING, PST, CMP, 4.50DX.12W, STNDRD
2.3	1	2025037400	RING, PST, CMP, 4.50DX.12W, STNDRD
2.4	2	2025029600	RAIL, RNG, OIL, 4.50 OD X .02
2.5	1	2025043700	SPACER, RING, OIL, 4.50
3	1	2021114804	AY, PIN AND PLUG
3.1	1	2025024616	PIN, PISTON
3.2	2	2025027201	PLUG, PIN, PISTON, 0.88 DIA

Maintenance parts			
1	2022111301	PISTON RING SET, LP	
1	2021102501	PISTON ASSEMBLY, LP INCLUDES PISTON, RING SET, PISTON PIN AND PISTON PIN PLUGS	
1	2022128201	REPLACEMENT PISTON PIN ASSEMBLY, LP INCLUDES PISTON PIN AND PISTON PIN PLUGS	

N.S.S. = Not sold separate

**PORTLAND COMPRESSOR**  
Experience You Can Depend On  
800-542-8300

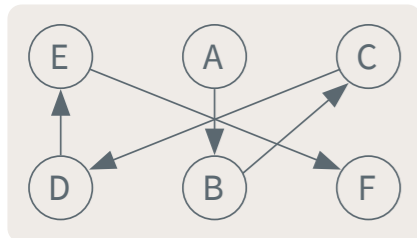
# Cylinder & head group 2021061006

(less head unloaders)

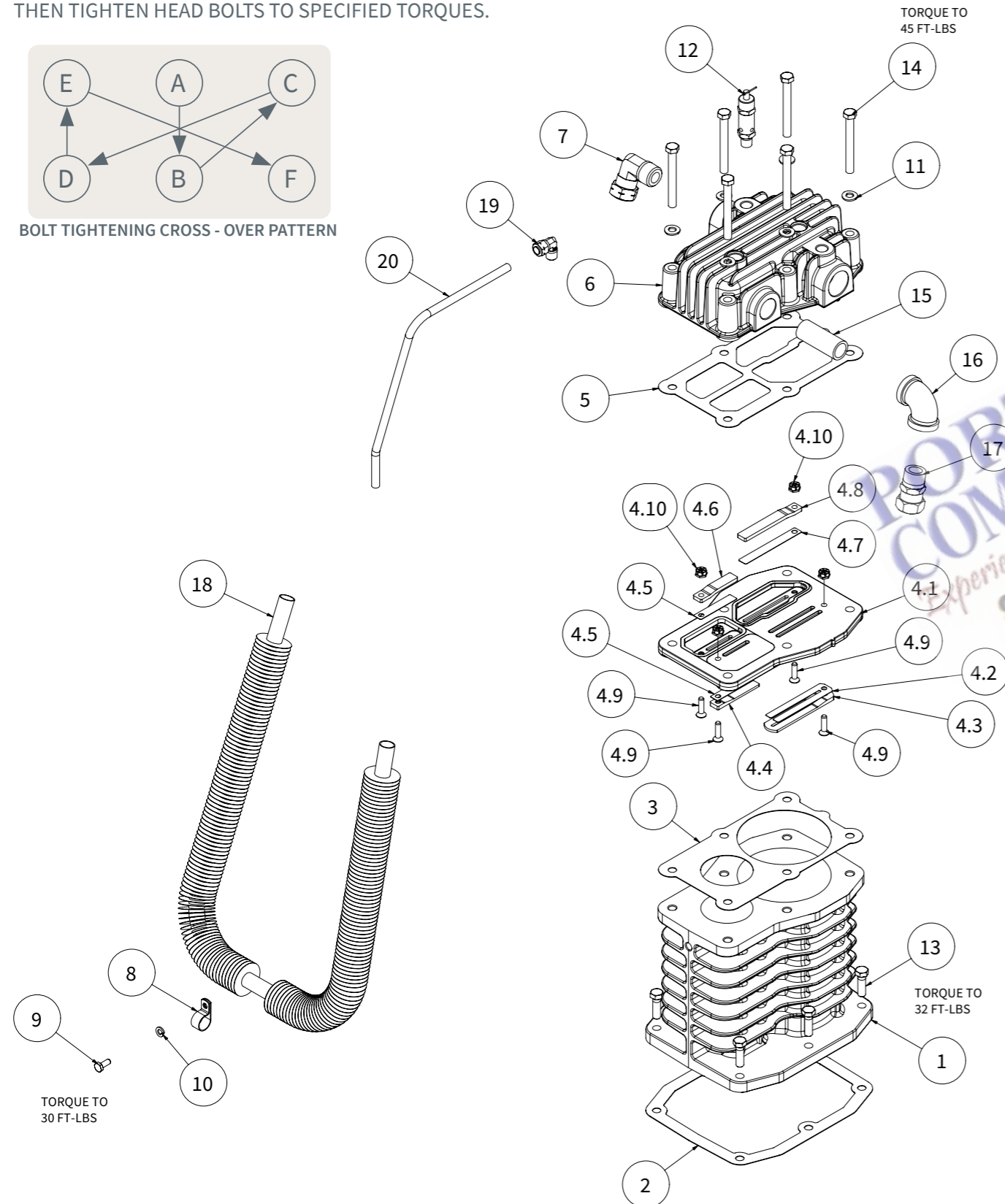
## HEAD BOLT TORQUE INSTRUCTIONS.

TIGHTEN HEAD BOLTS IN A CROSS-OVER PATTERN BRINGING ALL SIX TO 45 FT-LBS TORQUE IN EVEN INCREMENTS.

OPERATE COMPRESSOR FOR ONE HOUR AT FULL LOAD. ALLOW COMPRESSOR TO COOL TO AMBIENT TEMPERATURE THEN TIGHTEN HEAD BOLTS TO SPECIFIED TORQUES.



BOLT TIGHTENING CROSS - OVER PATTERN



# Cylinder & head group 2021061006

(less head unloaders)

Item number	Qty.	Part number	Description
1	1	2024319701	CYLINDER
2	1	2024704301	GASKET, CYLINDER/CRANKCASE
3	1	2024704502	GASKET, CYLINDER/VALVE PLATE
4	1	2024411651	VALVE PLATE ASSEMBLY
4.1	1	2024411601	VALVE PLATE (N.S.S. - MUST ORDER V.P. ASSEMBLY)
4.2	1	2023914900	VALVE, REED, STNLS STL(1/4 SCR) (N.S.S. - MUST ORDER V.P. ASSEMBLY)
4.3	1	2023904102	BUMPER, VALVE, LP SUC(1/4 SCREW) (N.S.S. - MUST ORDER V.P. ASSEMBLY)
4.4	1	2023904300	BUMPER, VALVE, HP SUC(1/4 SCREW) (N.S.S. - MUST ORDER V.P. ASSEMBLY)
4.5	2	2023914802	VALVE, REED, STNLS STL (N.S.S. - MUST ORDER V.P. ASSEMBLY)
4.6	1	2023904502	BUMPER, VALVE, LP DIS(1/4 SCREW) (N.S.S. - MUST ORDER V.P. ASSEMBLY)
4.7	1	2023914801	VALVE, REED, STNLS STL (N.S.S. - MUST ORDER V.P. ASSEMBLY)
4.8	1	2023904501	BUMPER, VALVE, LP DIS(1/4 SCREW) (N.S.S. - MUST ORDER V.P. ASSEMBLY)
4.9	4	0216220813	SCREW, CAP, CS, FLAT, .25NCX1.00 (N.S.S. - MUST ORDER V.P. ASSEMBLY)
4.10	4	0281220405	NUT, LOK, .25NC (N.S.S. - MUST ORDER V.P. ASSEMBLY)
5	1	2024703502	GASKET, VALVE PLATE/HEAD
6	1	2024411501	HEAD
7	1	2014706649	FIT T, ELBOW, COMP, 075CTX075MPX9
8	1	2025065927	CLAMP, TUBE, 0.75DIA, 0.75 CENTER
9	1	2025501235	SCREW, CAP, CS, HEX, PL.25NCX0.62
10	1	2025501564	WASHER, HLOK.250CRS, PL, .062 THK
11	6	2014706635	SPRING, WASHER
12	1	2023918108	VALVE, RELIEF, 100PSI, 025P, ANC
13	6	0144324268	SCREW, CAP, CS, HEX, SEAL38NCX1.25
14	6	2014706533	SCREW, CAP, CS, HEX, ZN.38NCX3.25
15	1	2025500715	NIPPLE, SCH40, TBE, BLK, 075X02.50
16	1	2025500462	FIT P, ELBOW, 150PLN 075X075X90
17	1	2024904730	FIT T, CONEC, FLLS, 075CTX075MP
18	1	2023506000	INTERCOOLER (N.S.S. - MUST ORDER INTERCOOLER KIT)
19	1	2014701663	FIT T, ELBOW, FLLS, 025NTX025MPX9
20	1	2023206065	PIP, BREATHER, CRS-1, 025OD

Maintenance parts			
1	2022128103	VALVE ASSEMBLY REPLACEMENT KIT INCLUDES ITEMS 3, 4, 5, 11, 14 AND INSTRUCTIONS	
1	2023506080	INTERCOOLER REPLACEMENT KIT INCLUDES INTERCOOLER AND NUT/SLEEVE FITTINGS	
1	2023400823	AIR FILTER / SILENCER	
1	2023400852	ELEMENT, AIR FILTER	

N.S.S. = Not sold separate

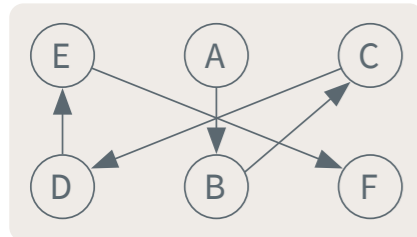
# Cylinder & head group 2021061007

(with head unloaders)

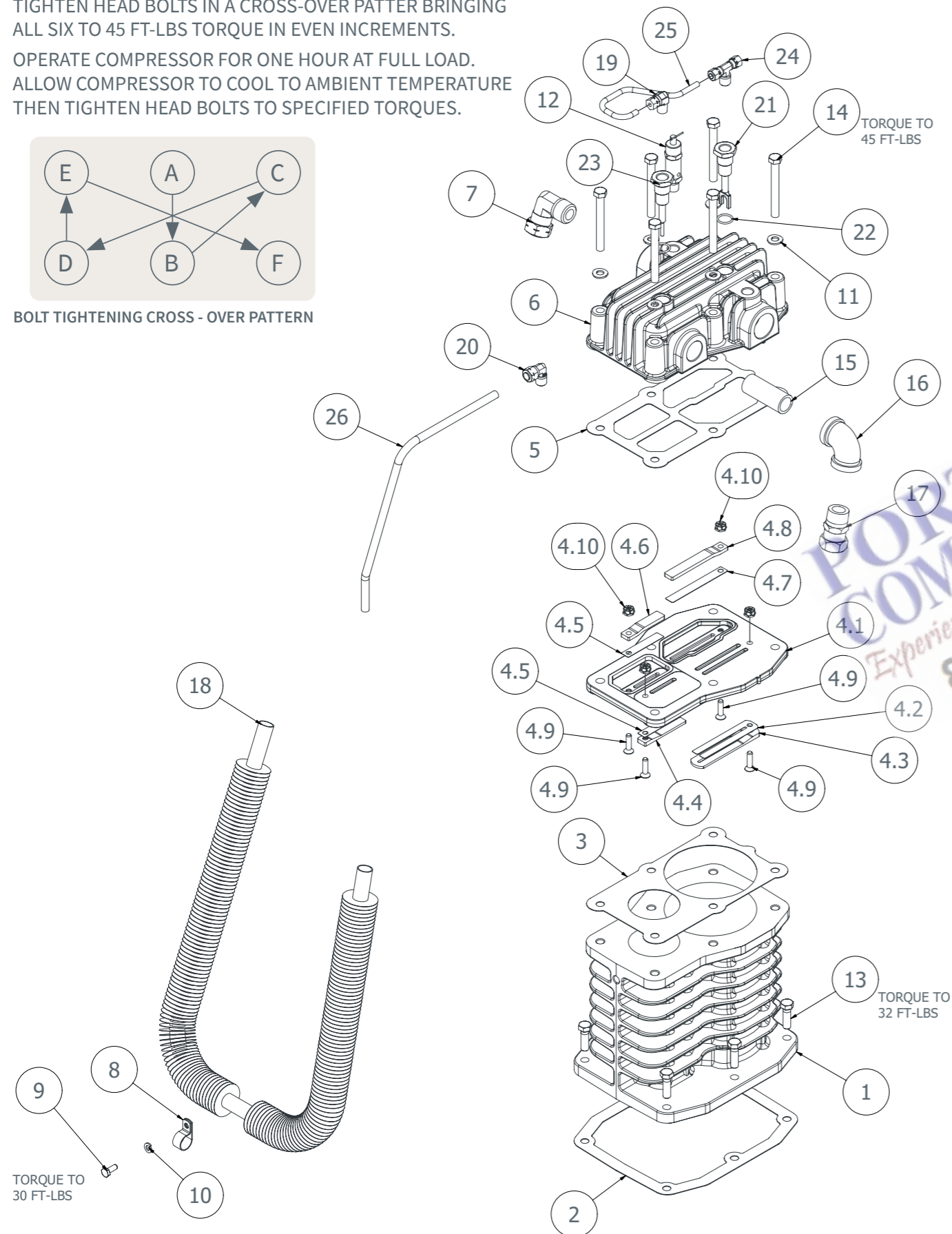
## HEAD BOLT TORQUE INSTRUCTIONS.

TIGHTEN HEAD BOLTS IN A CROSS-OVER PATTERN BRINGING ALL SIX TO 45 FT-LBS TORQUE IN EVEN INCREMENTS.

OPERATE COMPRESSOR FOR ONE HOUR AT FULL LOAD. ALLOW COMPRESSOR TO COOL TO AMBIENT TEMPERATURE THEN TIGHTEN HEAD BOLTS TO SPECIFIED TORQUES.



BOLT TIGHTENING CROSS - OVER PATTERN



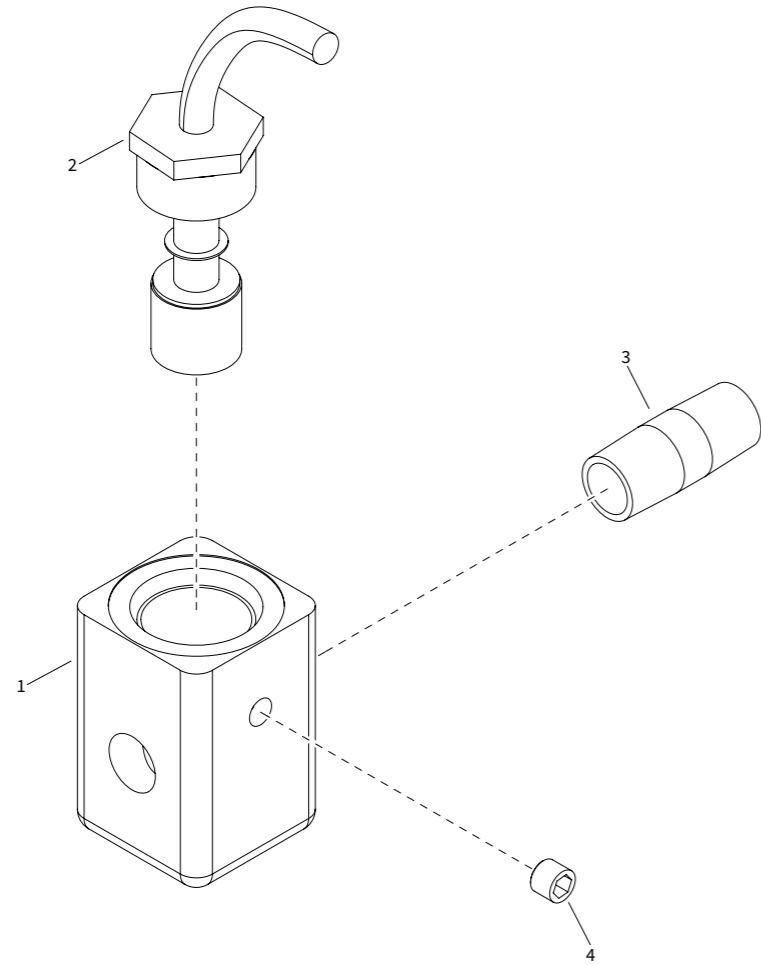
# Cylinder & head group 2021061007

(with head unloaders)

Item number	Qty.	Part number	Description
1	1	2024319701	CYLINDER
2	1	2024704301	GASKET, CYLINDER/CRANKCASE
3	1	2024704502	GASKET, CYLINDER/VALVE PLATE
4	1	2024411651	VALVE PLATE ASSEMBLY
4.1	1	2024411601	VALVE PLATE (N.S.S. - MUST ORDER V.P. ASSEMBLY)
4.2	1	2023914900	VALVE, REED, STNLS STL (1/4 SCR) (N.S.S. - MUST ORDER V.P. ASSEMBLY)
4.3	1	2023904102	BUMPER, VALVE, LP SUC (1/4 SCREW) (N.S.S. - MUST ORDER V.P. ASSEMBLY)
4.4	1	2023904300	BUMPER, VALVE, HP SUC (1/4 SCREW) (N.S.S. - MUST ORDER V.P. ASSEMBLY)
4.5	2	2023914802	VALVE, REED, STNLS STL (N.S.S. - MUST ORDER V.P. ASSEMBLY)
4.6	1	2023904502	BUMPER, VALVE, LP DIS (1/4 SCREW) (N.S.S. - MUST ORDER V.P. ASSEMBLY)
4.7	1	2023914801	VALVE, REED, STNLS STL (N.S.S. - MUST ORDER V.P. ASSEMBLY)
4.8	1	2023904501	BUMPER, VALVE, LP DIS (1/4 SCREW) (N.S.S. - MUST ORDER V.P. ASSEMBLY)
4.9	4	0216220813	SCREW, CAP, CS, FLAT, .25NCX1.00 (N.S.S. - MUST ORDER V.P. ASSEMBLY)
4.10	4	0281220405	NUT, LOK, .25NC (N.S.S. - MUST ORDER V.P. ASSEMBLY)
5	1	2024703502	GASKET, VALVE PLATE/HEAD (N.S.S. - MUST ORDER V.P. ASSEMBLY)
6	1	2024411502	HEAD, UNLOADER
7	1	2014706649	FIT T, ELBOW, COMP, 075CTX075MPX9
8	1	2025065927	CLAMP, TUBE, 0.75DIA, 0.75 CENTER
9	1	2025501235	SCREW, CAP, CS, HEX, PL.25NCX0.62
10	1	2025501564	WASHER, HLOK.250CRS, PL, .062 THK
11	6	2014706635	SPRING, WASHER
12	1	2023918108	VALVE, RELIEF, 100PSI, 025P, ANC
13	6	0144324268	SCREW, CAP, CS, HEX, SEAL38NCX1.25
14	6	2014706533	SCREW, CAP, CS, HEX, ZN.38NCX3.25
15	1	2025500715	NIPPLE, SCH40, TBE, BLK, 075X02.50
16	1	2025500462	FIT P, ELBOW, 150PLN 075X075X90
17	1	2024904730	FIT T, CONEC, FLLS, 075CTX075MP
18	1	2023506000	INTERCOOLER ( N.S.S. - MUST ORDER INTERCOOLER KIT)
19	2	2014701663	FIT T, ELBOW, FLLS, 025NTX025MPX9
20	1	2023206065	PIP, BREATHER, CRS-1, 025OD
21	1	2023908801	UNLOADER, INTAKE, LP, R
22	2	0663211775	O-RING, SILICON, 0.08W, 0.64ID
23	1	2023908802	UNLOADER, INTAKE, HP, R
24	1	2025500557	FIT T, TEE--, FLLS, 025NTX025NT
25	1	2023206049	PIP, UNLDR, CRS-1

Maintenance Parts			
1	2022128103	VALVE ASSEMBLY REPLACEMENT KIT INCLUDES ITEMS 3, 4, 5, 11, 14 AND INSTRUCTIONS	
1	2023506080	INTERCOOLER REPLACEMENT KIT INCLUDES INTERCOOLER AND NUT/SLEEVE FITTINGS	
1	2023400823	AIR FILTER / SILENCER	
1	2023400852	ELEMENT, AIR FILTER	

N.S.S. = Not sold separate

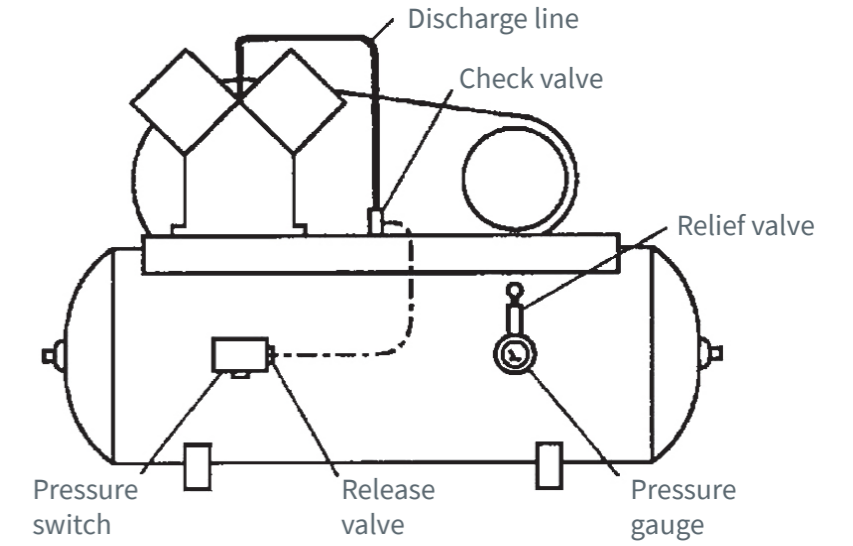


Item number	Qty.	Part number	Description
1	1	2024411201	HOUSING, OIL SW
2	1	1312101285	SWITCH: OIL, LOW LEVEL, 600VAC
3	1	0603415176	NIPPLE, SCH40, TBE, GLV, 050X2.00
4	1	1312100306	PLUG: 1/8" HEX HD.

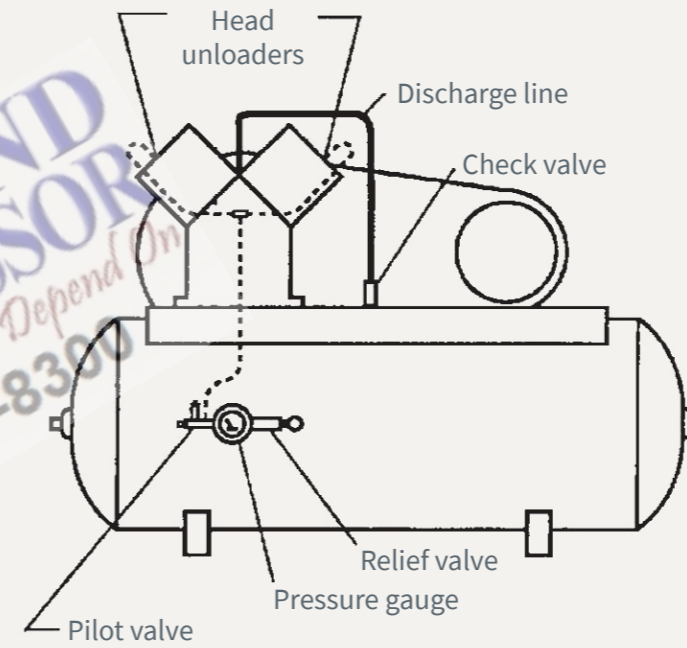
N.S.S. = Not sold separate

### Control piping schematics

#### Control piping for automatic start/stop operation (with loadless starting)

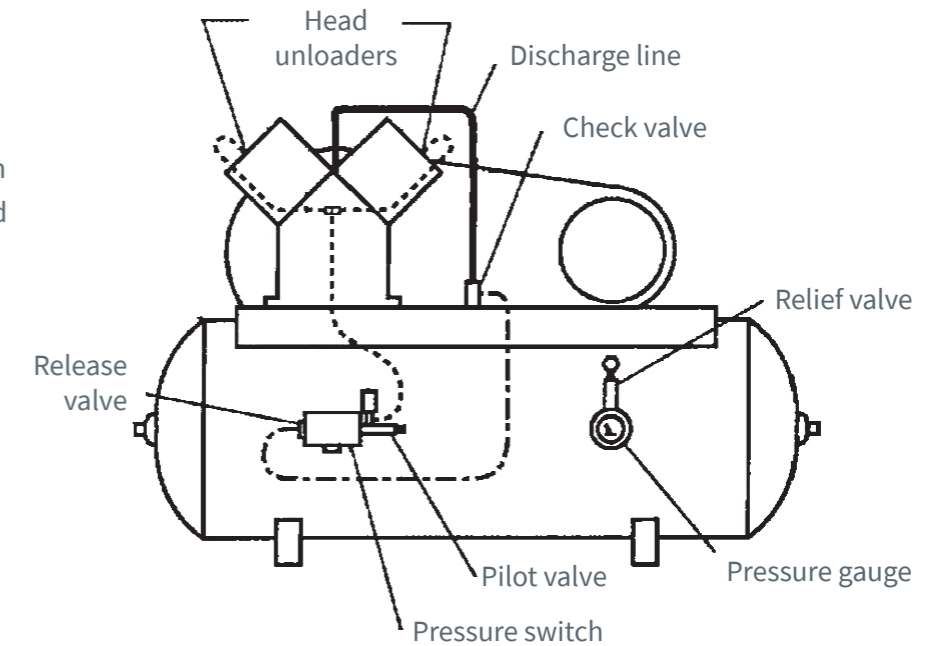


#### Control piping for continuous run operation



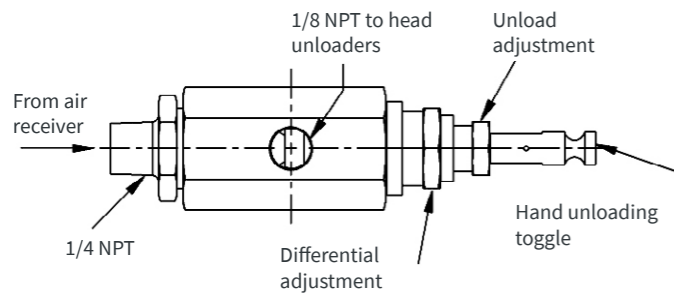
#### Control piping for dual control operation

Pilot valve is open (stem screwed out) for Continuous Run operation  
 Pilot valve is closed (stem screwed in) for automatic Start/Stop operation (with loadless starting)



PORTLAND COMPRESSOR  
 Experience You Can Depend On  
 800-542-8399

## Pilot valves



### 20239128xx Series Pilot Valve (Continuous run operation)

See Part # below (per pressure setting) to obtain correct pilot valve.

Part #	Load PSI	Unload PSI
2023912809	165	175

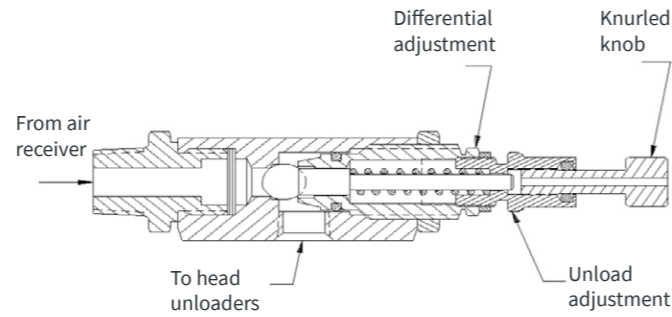
### Differential Setting Chart

Applies to 20239121xx series pilot valves.

Unload (PSI)	Min. Dif. (PSI)	Max. Dif. (PSI)
175	5	45

#### Warning!

Not all pilots are for use with all compressor systems. Make sure that the pilot you order is set within the safe operating limits of your compressor. Failure to heed this warning could result in an explosion.



### 20239121xx Series Pilot Valve (Dual control operation)

See Part # below (per pressure setting) to obtain correct pilot valve.

Part #	Load PSI	Unload PSI
2023912111	150	165

## Suction valve unloader assemblies

### Description

The Atlas Copco suction valve unloader assembly consists of unloading assemblies on the suction valves, having a plunger to contact the suction valve reed and an unloader pilot valve (20239128xx or 20239121xx series) to automatically regulate the passing of air tank pressure to the unloading arrangement.

### Continuous run operation

Suction valve unloader assemblies are recommended for use on Atlas Copco compressors where the compressor is to run continuously and a constant pressure is to be maintained. The purpose is to automatically unseat the suction valve of the compressor when the air supply is greater than the demand.

Unloading occurs when air tank pressure is sufficient to overcome pilot valve spring pressure. The check ball is then unseated, allowing air tank pressure to pass to the unloader assemblies. The compressor will run unloaded until the air tank pressure drops to a predetermined level. At this time, the action of the ball is reversed, shutting off air tank pressure to the unloader assemblies and venting the unloader to atmosphere. This allows the compressor to load. The drive, either electric motor or engine, runs continuously and must be started and stopped manually. 20239128xx series pilot valves feature a toggle lever which can be flipped to provide manual unloading.

### Dual control operation

Dual control operation is designed to provide a choice between “start/stop” or “continuous run” operation. The 20239121xx series pilot valve can be set for “start/stop” operation by turning the knurled knob at the end of the pilot valve (refer to illustration for 20239121xx series pilot valve) clockwise until it stops. Under these circumstances, a pressure switch is required to stop the motor. Failure to use a pressure switch, with the pilot valve locked out, will result in unsafe conditions.

#### Warning

A pressure switch must be incorporated whenever 20239121xx series pilot valve is employed as part of the control system.

The compressor will operate in the continuous run mode if the knurled knob is turned counterclockwise until it stops.

### Installation

The pilot valve is mounted directly into the air tank. Compressors in the field, not equipped with these controls, can be converted. Consult your local Atlas Copco distributor for assistance with conversion procedures.

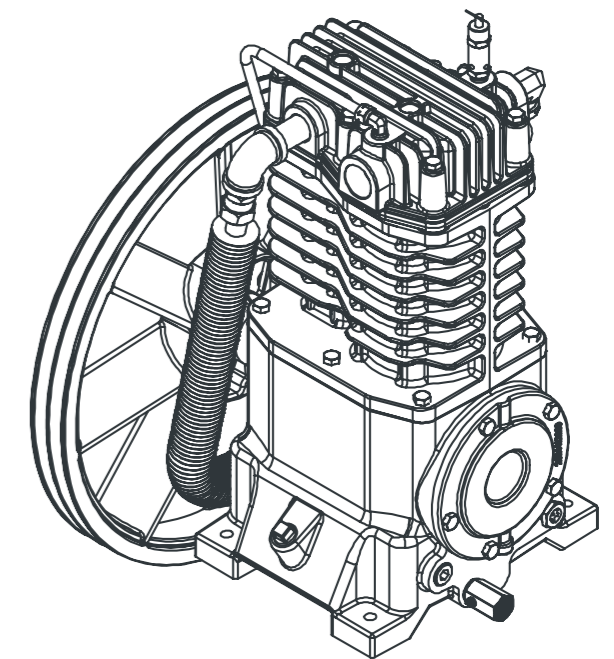
### Service

If a change in pilot valve operation is detected, remove the pilot valve from the air tank and check the screen in the inlet of the pilot valve for obstructions. Clean the screen if necessary.

### Adjustment

The unloading pressure is adjustable and is regulated by turning the unload adjustment hex nut (refer to pilot valve illustrations). Turn the hex nut clockwise to increase and counterclockwise to decrease the unloading pressure.

The differential (difference between unloading and loading pressure) is set by turning the differential adjustment hex nut (refer to pilot valve illustrations). Increase the differential pressure by turning the hex nut clockwise - decrease by turning counterclockwise. Make all adjustments in small increments. Tighten the locknuts after adjustment.



PORTLAND  
 COMPRESSOR  
 Experience You Can Depend On  
 800-542-8300

## Typical unit repair parts list

The parts listed here are for standard CRS-1 (up to 175 PSI) units and may or may not be applicable to custom built units. Check with your local authorized Atlas Copco distributor for parts that can be used for custom built units. Make sure the components you order are rated within the safe operating limits of your system. If you are doubtful about which components to order, contact your local Atlas Copco distributor.

### (CRS-1 Mag starter - horizontal tank - electric motor)

Qty.	Part number	Part number	Description
	<b>120 gal.</b>	<b>200 gal.</b>	
1	2023101502		TANK
1	2023912903		TANK DRAIN VALVE
1	2023913804		SERVICE VALVE
1	2025018507		PRESSURE GUAGE
1	2023738404		PRESSURE SWITCH
1	9710533300		PRESSURE RELIEF VALVE IN TANK
1	2023913610		PRESSURE RELIEF VALVE IN DISCHARGE LINE
1	2023914100		CHECK VALVE
1	2023206052		DISCHARGE TUBE
1	2024903708		TUBE FITTING, NUT WITH SLEEVE
1	2023346440		BELT GUARD ASSEMBLY
1	2023738469		PRESSURE SWITCH (10 HP ONLY)
	<b>7.5 h.p.</b>	<b>10 h.p.</b>	
1	1312100724		DRIVE BELT
2		1312100723	DRIVE BELT (PHASE 1)
2		2024200435	DRIVE BELT (PHASE 3)
1	2024212600	2024208300	MOTOR PULLEY (PHASE 1)
1		2024210100	MOTOR PULLEY (PHASE 3)
1	1312100446	1312100446	MOTOR BUSHING
	<b>200v, 3Ø</b>	<b>230/460v, 3Ø</b>	
1	2023000869	2023000814	5 hp MOTOR (ODP)
1	2023000961	2023000928	7.5 hp MOTOR (ODP)
1	2023001058	2023001025	10 hp MOTOR (ODP)

! Pre-formed discharge tubes are available. Contact factory with model & tank size information.

### (CRS-1 Simplex - horizontal tank - electric motor)

Qty.	Part number	Part number	Description
	<b>120 gal.</b>		
1	2023101502		TANK
1	2023912903		TANK DRAIN VALVE
1	2023913804		SERVICE VALVE
1	1312100028		PRESSURE GUAGE
1	2014706337		SOLENOID VALVE
1	9710533300		PRESSURE RELIEF VALVE IN TANK
1	2023913610		PRESSURE RELIEF VALVE IN DISCHARGE LINE
1	2023914100		CHECK VALVE
1	2023206052		DISCHARGE TUBE
1	2024903708		TUBE FITTING, NUT WITH SLEEVE
1	2023346440		BELT GUARD ASSEMBLY
	<b>7.5 h.p.</b>	<b>10 h.p.</b>	
1	1312100724		DRIVE BELT
2		1312100723	DRIVE BELT (PHASE 1)
2		2024200435	DRIVE BELT (PHASE 3)
1	2024212600	2024208300	MOTOR PULLEY (PHASE 1)
1		2024210100	MOTOR PULLEY (PHASE 3)
1	1312100446	1312100446	MOTOR BUSHING
	<b>200v, 3Ø</b>	<b>230/460v, 3Ø</b>	
1	2023000869	2023000814	5 hp MOTOR (ODP)
1	2023000961	2023000928	7.5 hp MOTOR (ODP)
1	2023001058	2023001025	10 hp MOTOR (ODP)

## Typical unit repair parts list

The parts listed here are for standard CRS-1 (up to 175 PSI) units and may or may not be applicable to custom built units. Check with your local authorized Atlas Copco distributor for parts that can be used for custom built units. Make sure the components you order are rated within the safe operating limits of your system. If you are doubtful about which components to order, contact your local Atlas Copco distributor.

### (CRS-1 Mag starter - vertical tank - electric motor)

Qty.	Part number	Part number	Part number	Description
	<b>80 gal.</b>	<b>120 gal.</b>	<b>200 gal.</b>	
1	2023108832	2023108792		TANK
1	2023924300	2023912903		TANK DRAIN VALVE
1	2023913804	2023913805		SERVICE VALVE
1	2025065900	2025018507		PRESSURE GUAGE
1	2023738404	2023738404		PRESSURE SWITCH
1	9710533300	9710533300		PRESSURE RELIEF VALVE IN TANK
1	2023913610	2023913610		PRESSURE RELIEF VALVE IN DISCHARGE LINE
1	2023914100	2023914100		CHECK VALVE
1	2023206103	2023206103		DISCHARGE TUBE
1	2024903708	2024903708		TUBE FITTING, NUT WITH SLEEVE
1	2023346440	2023346440		BELT GUARD ASSEMBLY
1		2023738469		PRESSURE SWITCH (10 HP ONLY)
	<b>5 h.p.</b>	<b>7.5 h.p.</b>	<b>10 h.p.</b>	
1	1312100722	1312100724		DRIVE BELT
2			1312100723	DRIVE BELT (PHASE 1)
2			2024200435	DRIVE BELT (PHASE 3)
1	2024207000	2024212600	2024208300	MOTOR PULLEY (PHASE 1)
1			2024210100	MOTOR PULLEY (PHASE 3)
1	1312100445	1312100446	1312100446	MOTOR BUSHING
	<b>230v, 1Ø</b>	<b>200v, 3Ø</b>	<b>230/460v, 3Ø</b>	
1	2023000868	2023000869	2023000814	5 hp MOTOR (ODP)
1	2023000966	2023000961	2023000928	7.5 hp MOTOR (ODP)
1	2023001061	2023001058	2023001025	10 hp MOTOR (ODP)

! Pre-formed discharge tubes are available. Contact factory with model & tank size information.

### (CRS-1 Simplex - vertical tank - electric motor)

Qty.	Part number	Part number	Part number	Description
	<b>80 gal.</b>	<b>120 gal.</b>		
1	2023108832	2023108792		TANK
1	2023924300	2023912903		TANK DRAIN VALVE
1	2023913804	2023913805		SERVICE VALVE
1	2025065900	2025018507		PRESSURE GUAGE
1	2014706337	2014706337		SOLENOID VALVE
1	9710533300	9710533300		PRESSURE RELIEF VALVE IN TANK
1	2023913610	2023913610		PRESSURE RELIEF VALVE IN DISCHARGE LINE
1	2023914100	2023914100		CHECK VALVE
1	2023206103	2023206103		DISCHARGE TUBE
1	2024903708	2024903708		TUBE FITTING, NUT WITH SLEEVE
1	2023346440	2023346440		BELT GUARD ASSEMBLY
	<b>5 h.p.</b>	<b>7.5 h.p.</b>	<b>10 h.p.</b>	
1	1312100722	1312100724		DRIVE BELT
2			1312100723	DRIVE BELT (PHASE 1)
2			2024200435	DRIVE BELT (PHASE 3)
1	2024207000	2024212600	2024208300	MOTOR PULLEY (PHASE 1)
1			2024210100	MOTOR PULLEY (PHASE 3)
1	1312100445	1312100446	1312100446	MOTOR BUSHING
	<b>230v, 1Ø</b>	<b>200v, 3Ø</b>	<b>230/460v, 3Ø</b>	
1	2023000868	2023000869	2023000814	5 hp MOTOR (ODP)
1	2023000966	2023000961	2023000928	7.5 hp MOTOR (ODP)
1	2023001061	2023001058	2023001025	10 hp MOTOR (ODP)

! Pre-formed discharge tubes are available. Contact factory with model & tank size information.

## Typical unit repair parts list

The parts listed here are for standard CRS-1 (up to 175 PSI) units and may or may not be applicable to custom built units. Check with your local authorized Atlas Copco distributor for parts that can be used for custom built units. Make sure the components you order are rated within the safe operating limits of your system. If you are doubtful about which components to order, contact your local Atlas Copco distributor.

### (CRS-1 Combustion engine driven)

Qty.	Part number	Part number	Part number	Part number	Description
	<b>Honda (11hp)</b>	<b>Honda (13hp)</b>	<b>Kohler (14hp)</b>	<b>Yanmar (9hp)</b>	
1	2023108011	2023108011	2023108011	2023108011	TANK
1	2023912901	2023912901	2023912901	2023912901	TANK DRAIN VALVE
1	1312100162	1312100162	1312100162	1312100162	BALL VALVE
1	2025018507	2025018507	2025018507	2025018507	PRESSURE GUAGE
1	9710533300	9710533300	9710533300	9710533300	PRESSURE RELIEF VALVE (IN TANK)
1	1312100723				DRIVE BELT
2		1312100736	1312100736	1312100736	
1	2024207501	2024207502	2024207502	1312100938	ENGINE PULLEY
1	2024222605	2024222605	2024222605	2024222605	ENGINE PULLEY BUSHING
1	2023346473	2023346473	2023346482	2023346482	BELT GUARD ASSEMBLY
1	2025008703	2025008703	2025008300	2025008200	THROTTLE CONTROL
1	1312100223	1312100224	1312101114	2023002500	ENGINE
1	2023206064	2023206064	2023206064		DISCHARGE TUBE
1	2024903708	2024903708	2024903708	2024903708	TUBE FITTING, NUT WITH SLEEVE
1	2023913610	2023913610	2023913610	2023913610	PRESSURE RELIEF VALVE (IN DISCHARGE LINE)
1	2023916401	2023916401	2023916401		UNLOADER VALVE
1				2023914100	CHECK VALVE (DISCHARGE LINE)
1				2023912809	PILOT

! Pre-formed discharge tubes are available. Contact factory with model & tank size information

### (CRS-1 Duplex - horizontal tank - electric motor)

Qty.	Part number	Part number	Part number	Description
	<b>120 gal.</b>	<b>200 gal.</b>		
1	2023107111	2023107610		TANK
1	2023912903	2023912903		TANK DRAIN VALVE
1	2023913804	2023913805		SERVICE VALVE
1	2025018507	2025018507		PRESSURE GUAGE
2	2014706337	2014706337		SOLENOID VALVE
1	9710533300	9710533300		PRESSURE RELIEF VALVE IN TANK
2	2023913610	2023913610		PRESSURE RELIEF VALVE IN DISCHARGE LINE
2	2023914100	2023914100		CHECK VALVE
2	2023206054	2023206057		DISCHARGE TUBE
2	2024903708	2024903708		TUBE FITTING, NUT WITH SLEEVE
2	2023346440	2023346440		BELT GUARD ASSEMBLY
	<b>5 h.p.</b>	<b>7.5 h.p.</b>	<b>10 h.p.</b>	
1	1312100722	1312100724		DRIVE BELT
2			1312100723	DRIVE BELT (PHASE 1)
2			2024200435	DRIVE BELT (PHASE 3)
1	2024207000	2024212600	2024208300	MOTOR PULLEY (PHASE 1)
1			2024210100	MOTOR PULLEY (PHASE 3)
1	1312100445	1312100446	1312100446	MOTOR BUSHING
	<b>230v, 1Ø</b>	<b>200v, 3Ø</b>	<b>230/460v, 3Ø</b>	
1	2023000868	2023000869	2023000814	5 hp MOTOR (ODP)
1	2023000966	2023000961	2023000928	7.5 hp MOTOR (ODP)
1	2023001061	2023001058	2023001025	10 hp MOTOR (ODP)

Part numbers shown in italics apply to tank mounted units and base mounted units.

## Atlas Copco standard warranty

**STANDARD WARRANTY:** Seller warrants that products of its own manufacture will be free from defects in workmanship and materials under normal use and service for the period specified in the product instruction manual. Warranty for service parts will be Ninety (90) days from date of factory shipment. Electric Motors, gasoline and diesel engines, electrical apparatus and all other accessories, components and parts not manufactured by Seller are warranted only to the extent of the original manufacturer's warranty.

Notice of the alleged defect must be given to the Seller, in writing with all identifying details including serial number, type of equipment and date of purchase within thirty (30) days of the discovery of the same during the warranty period.

Seller's sole obligation on this warranty shall be, at its option, to repair or replace or refund the purchase price of any product or part thereof which proves to be defective. If requested by Seller, such product or part thereof must be promptly returned to seller, freight prepaid, for inspection.

Seller warrants repaired or replaced parts of its own manufacture against defects in materials and workmanship under normal use and service for ninety (90) days or for the remainder of the warranty on the product being repaired.

This warranty shall not apply and Seller shall not be responsible or liable for:

- Consequential, collateral or special losses or damages;
- Equipment conditions caused by fair wear and tear, abnormal conditions of use, accident, neglect or misuse of equipment, improper storage or damage resulting during shipping;
- Deviation from operating instructions, specifications or other special terms of sale;
- Labor charges, loss or damage resulting from improper operation, maintenance or repairs made by person(s) other than Seller or Seller's authorized service station.

In no event shall Seller be liable for any claims whether arising from breach of contract or warranty or claims of negligence or negligent manufacture in excess of the purchase price.

THIS WARRANTY IS THE SOLE WARRANTY OF SELLERS AND ANY OTHER WARRANTIES, WHETHER EXPRESS OR IMPLIED IN LAW OR IMPLIED IN FACT, INCLUDING ANY WARRANTIES OF MERCHANTABILITY AND FITNESS FOR PARTICULAR USE ARE HEREBY SPECIFICALLY EXCLUDED.

LIABILITY LIMITATIONS: Under no circumstances

shall the Seller have any liability for liquidated damages or for collateral, consequential or special damages or for loss of profits, or for actual losses or for loss of production or progress of construction, whether resulting from delays in delivery or performance, breach of warranty, negligent manufacture or otherwise.

**ENVIRONMENTAL AND OSHA REQUIREMENTS:** At the time of shipment of the equipment from the factory, Atlas Copco will comply with the various Federal, State and local laws and regulations concerning occupational health and safety and pollution. However, in the installation and operation of the equipment and other matters over which the seller has no control, the Seller assumes no responsibility for compliance with those laws and regulations, whether by the way of indemnity, warranty or otherwise.

In order to be First in Mind - First in Choice® for all your quality compressed air needs, Atlas Copco delivers the products and services that help to increase your business' efficiency and profitability.

Atlas Copco's pursuit of innovation never ceases, driven by our need for reliability and efficiency. Always working with you, we are committed to providing you the customized quality air solution that is the driving force behind your business.

**PORTLAND  
COMPRESSOR**  
*Experience You Can Depend On*  
**800-542-8300**

The Atlas Copco logo, featuring the company name in a stylized, italicized font with horizontal lines above and below the text.

**Atlas Copco Compressors**

300 Technology Center Drive Ste 550  
Rock Hill, South Carolina 29730  
[atlascopco.com](http://atlascopco.com)