

8

7

6

5

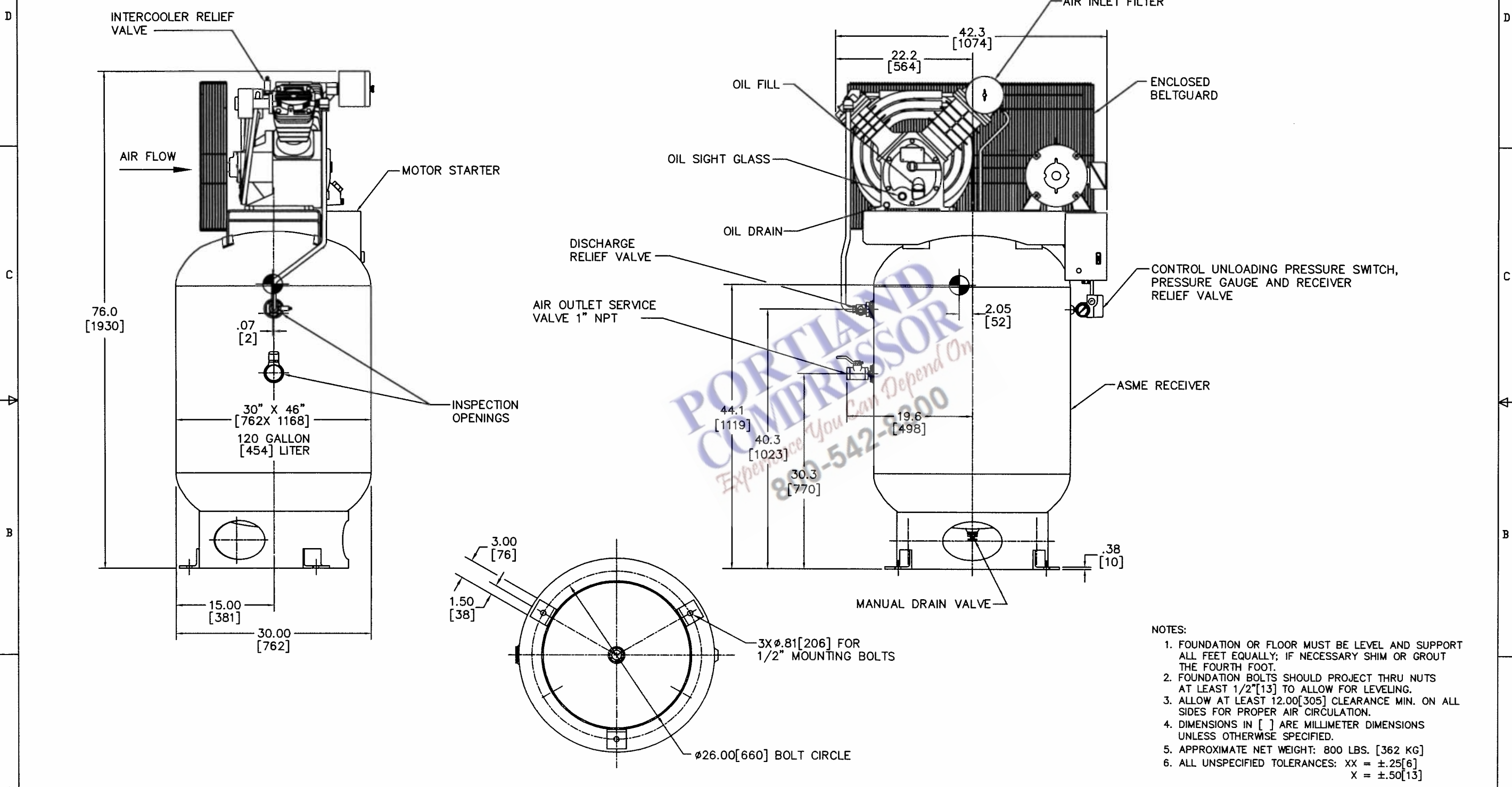
4

3

2

1

REVISIONS						
ZONE	REV	EDN	DESCRIPTION	DATE	DRAWN	APP'D
	A	ITS104380	INITIAL RELEASE	2012OCT18	G.Levi	J.Ballard



- NOTES:
1. FOUNDATION OR FLOOR MUST BE LEVEL AND SUPPORT ALL FEET EQUALLY; IF NECESSARY SHIM OR GROUT THE FOURTH FOOT.
 2. FOUNDATION BOLTS SHOULD PROJECT THRU NUTS AT LEAST 1/2"[13] TO ALLOW FOR LEVELING.
 3. ALLOW AT LEAST 12.00[305] CLEARANCE MIN. ON ALL SIDES FOR PROPER AIR CIRCULATION.
 4. DIMENSIONS IN [] ARE MILLIMETER DIMENSIONS UNLESS OTHERWISE SPECIFIED.
 5. APPROXIMATE NET WEIGHT: 800 LBS. [362 KG]
 6. ALL UNSPECIFIED TOLERANCES: XX = ±.25[6]
X = ±.50[13]

APPROVED FOR:	SIZE:	JOB:	SPEC:
IR ORDER NO.:	MODEL:	ITEM:	CONTRACTOR:
CUSTOMER:	PISTON DISPLACEMENT cfm (m3/min):	ARCH. ENGR.:	MTR. ENCL.:
	SPEED rpm:	MTR. HP/KW:	PH: HZ:
	DISCHARGE PRESSURE RATING psig (bPa):	MTR. VOLTS:	STARTER TYPE:
CUSTOMER ORDER NO.:	ACTUAL DELIVERY cfm (m3/min):		
PER:	DATE:	REGULATION:	

<small>THIS DRAWING IS THE PROPERTY OF INGERSOLL-RAND CO. AND IS GIVEN TO THE RECEIVER IN CONFIDENCE. THE RECEIVER BY RECEPTION AND RETENTION OF THE DRAWING ACCEPTS THE DRAWING IN CONFIDENCE AND AGREES THAT, EXCEPT AS AUTHORIZED IN WRITING BY INGERSOLL-RAND CO. IT WILL (1) NOT USE THE DRAWING OR ANY COPY THEREOF OR THE CONFIDENTIAL OR TRADE SECRET INFORMATION THEREIN; (2) NOT COPY THE DRAWING; (3) NOT DISCLOSE TO OTHERS EITHER THE DRAWING OR THE CONFIDENTIAL OR TRADE SECRET INFORMATION THEREIN; AND (4) UPON COMPLETION OF THE NEED TO RETAIN THE DRAWING, OR UPON DEMAND, RETURN THE DRAWING, ALL COPIES THEREOF, AND ALL MATERIAL COPIED THEREFROM.</small>	<small>THIS DRAWING CONTAINS CONFIDENTIAL AND TRADE SECRET INFORMATION. IS THE PROPERTY OF INGERSOLL-RAND CO. AND IS GIVEN TO THE RECEIVER IN CONFIDENCE. THE RECEIVER BY RECEPTION AND RETENTION OF THE DRAWING ACCEPTS THE DRAWING IN CONFIDENCE AND AGREES THAT, EXCEPT AS AUTHORIZED IN WRITING BY INGERSOLL-RAND CO. IT WILL (1) NOT USE THE DRAWING OR ANY COPY THEREOF OR THE CONFIDENTIAL OR TRADE SECRET INFORMATION THEREIN; (2) NOT COPY THE DRAWING; (3) NOT DISCLOSE TO OTHERS EITHER THE DRAWING OR THE CONFIDENTIAL OR TRADE SECRET INFORMATION THEREIN; AND (4) UPON COMPLETION OF THE NEED TO RETAIN THE DRAWING, OR UPON DEMAND, RETURN THE DRAWING, ALL COPIES THEREOF, AND ALL MATERIAL COPIED THEREFROM.</small>	<small>THIRD ANGLE PROJECTION</small> DRAWN: G.Levi CHECKED: D.Adams APPROVED: J.Smith DATE: 2012OCT18
---	---	--

IR Ingersoll Rand

GENERAL ARRANGEMENT
2545K10V

SIZE: A1	ESTIMATED WEIGHT OR VALUE ABOVE: NONE	DWG NO.: 46827416	REV: A
UNIT: VALUE PACKAGE		SHEET: 1 OF 1	