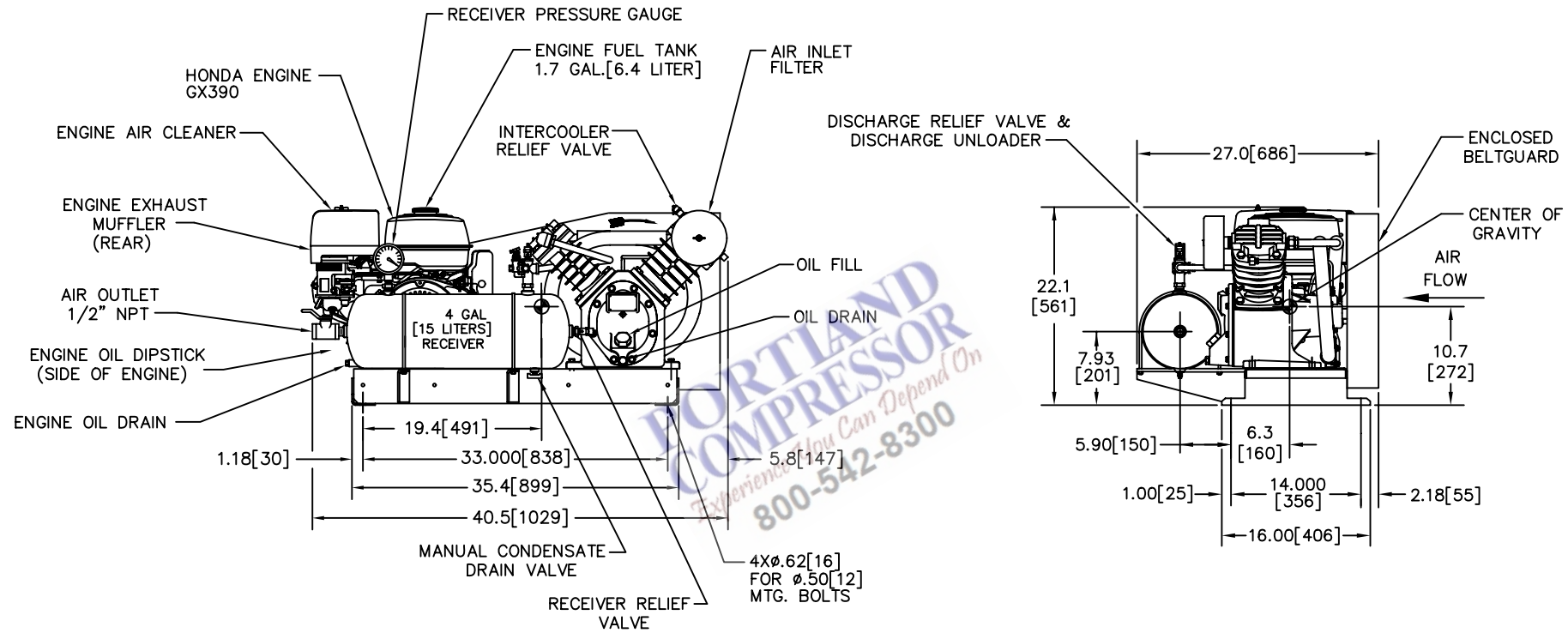


ZONE		REV	ECN	DESCRIPTION	DATE	DRAWN	APPD
A		ITS103291	INITIAL RELEASE		2011AUG11	G.Levi	J.Smith



NOTES:

- FOUNDATION OR FLOOR MUST BE LEVEL AND SUPPORT ALL FEET EQUALLY; IF NECESSARY SHIM OR GROUT THE FOURTH FOOT.
- FOUNDATION BOLTS SHOULD PROJECT THRU NUTS AT LEAST 1/2" [13] TO ALLOW FOR LEVELING.
- ALLOW AT LEAST 12.00 [305] CLEARANCE MIN. ON ALL SIDES FOR PROPER AIR CIRCULATION.
- ALL UNSPECIFIED TOLERANCES: XXX = ±.12 [3]
XX = ±.25 [6]
X = ±.50 [13]
- DIMENSIONS IN [] ARE MILLIMETER DIMENSIONS UNLESS OTHERWISE SPECIFIED.
- WEIGHT: APPROX. 260 LBS. [118 KG]

DRAWING IN INCHES [METRIC]

APPROVED FOR:		SIZE:	JOB:	SPEC:	PROPERTY NOTICE		DRAWN		DATE		TITLE	
IR ORDER NO.		MODEL:	ITEM:	CONTRACTOR:	THIS DRAWING CONTAINS CONFIDENTIAL AND TRADE SECRET INFORMATION. IS THE PROPERTY OF INGERSOLL-RAND CO. AND IS GIVEN TO THE RECEIVER IN CONFIDENCE. THE RECEIVER BY RECEIPT AND RETENTION OF THE DRAWING ACCEPTS THE DRAWING IN CONFIDENCE AND AGREES THAT EXCEPT AS AUTHORIZED IN WRITING BY INGERSOLL-RAND CO. IT WILL NOT USE THE DRAWING OR ANY COPY THEREOF OR THE CONFIDENTIAL OR TRADE SECRET INFORMATION THEREIN; (2) NOT COPY THE DRAWING; (3) NOT DISCLOSE TO OTHERS EITHER THE DRAWING OR THE CONFIDENTIAL OR TRADE SECRET INFORMATION THEREIN; AND (4) UPON COMPLETION OF THE NEED TO RETAIN THE DRAWING OR UPON DEMAND, RETURN THE DRAWING, ALL COPIES THEREOF, AND ALL MATERIAL COPIED THEREFROM.		G.Levi		2011AUG11		GENERAL ARRANGEMENT	
CUSTOMER:		PISTON DISPLACEMENT cfm [m3/min]:	ARCH. ENGR.:		D.Adams		D.Adams		2011AUG11		2475X13GH HONDA	
CUSTOMER ORDER NO.		SPEED rpm:			J.Smith		J.Smith		2011AUG11		46825337	
PER:		DISCHARGE PRESSURE RATING psig [kPa]:									A	
DATE:		ACTUAL DELIVERY cfm [m3/min]									A	
		REGULATION:									A	